

8

7

6

5

4

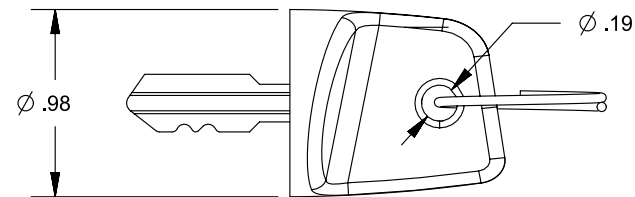
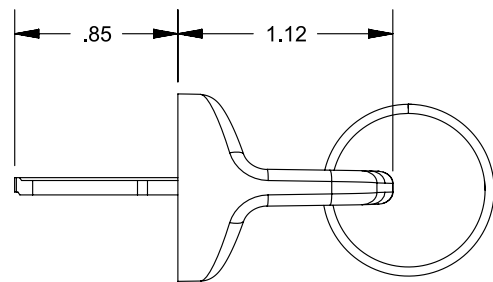
3

2

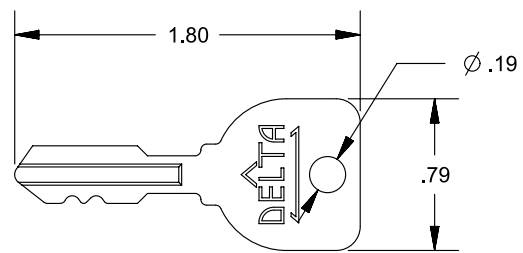
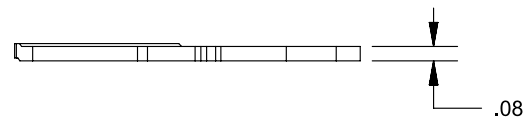
1

REVISIONS

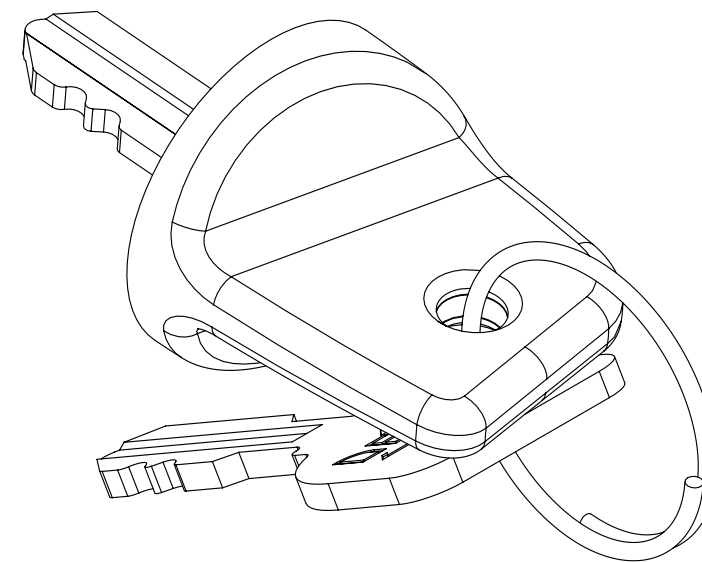
REV.	DESCRIPTION	DATE	INIT
0	INITIAL RELEASE	05/02/17	IDK



UMBRELLA KEY DETAIL



STAMPED KEY DETAIL



NOTES

- INCLUDES
 - ONE (1) STAMPED KEY P/N 688S-STD
 - ONE (1) UMBRELLA KEY WITH RING P/N 688P-UMB-003
- MUST BE IN COMPLIANCE WITH DIRECTIVE 2011/65/EU OF THE EUROPEAN PARLIAMENT AND THE COUNCIL OF 8 JUNE 2011 ON THE RESTRICTION OF THE USE OF CERTAIN HAZARDOUS SUBSTANCES IN ELECTRICAL AND ELECTRONIC EQUIPMENT (ROHS DIRECTIVE)
- INTERPRET THIS DRAWING IN ACCORDANCE WITH ASME Y14.5-2009

PROPRIETARY & CONFIDENTIAL THE INFORMATION CONTAINED IN THIS DRAWING IS THE SOLE PROPERTY OF DELTA SYSTEMS. ANY REPRODUCTION IN PART OR AS A WHOLE WITHOUT THE WRITTEN PERMISSION OF DELTA SYSTEMS IS PROHIBITED.	UNLESS OTHERWISE SPECIFIED DIMENSIONS ARE IN INCHES TOLERANCES ARE: .X± .1 .XX± .02 .XXX± .005 X°± 1°	DRAWN ikirbawy	DATE 21-Nov-2012	DELTA SYSTEMS 1734 FROST ROAD STREETSBORO, OHIO 44241 330-626-2811 WWW.DELTASYSTEMSINC.COM
		CHECKED bwetrich	DATE 02-May-2017	
APPROVED ikirbawy	DATE 03-May-2017	PROJECTED VIEWS ARE 3RD ANGLE 	TITLE Key Assembly, Umbrella-Standard Keys	
DELTA SYSTEMS INC. DOES NOT ASSUME ANY LIABILITY ARISING OUT OF THE MISAPPLICATION OF ANY PRODUCT	COMPUTER GENERATED DRAWING - NO MANUAL CHANGES ALLOWED	MATERIAL N/A	FINISH N/A	
		DO NOT SCALE DRAWING	STATUS DS4_Design	DWG. NO. 688P-004
				SCALE NTS
				SHEET 1 OF 1
				PROJECT NO. 096
				REVISION 0

8

7

6

5

4

3

2

1