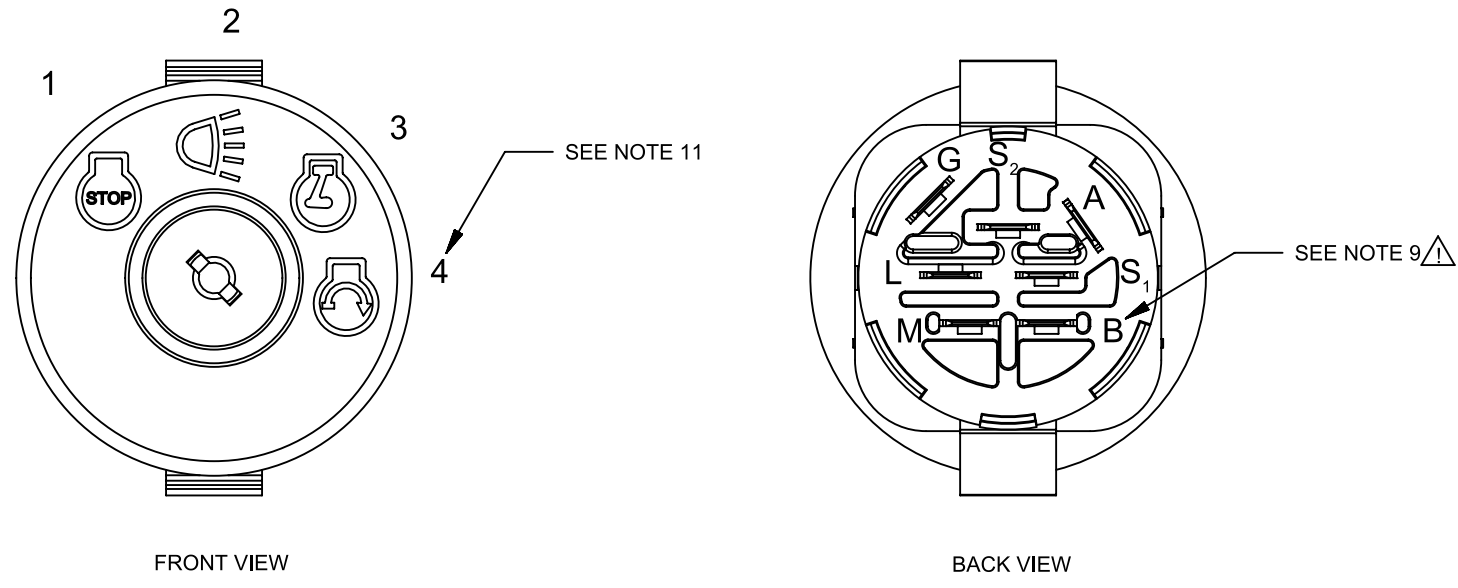
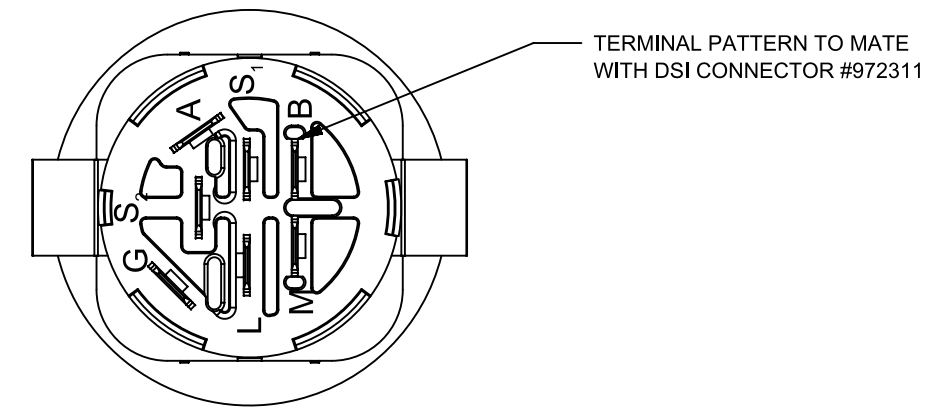
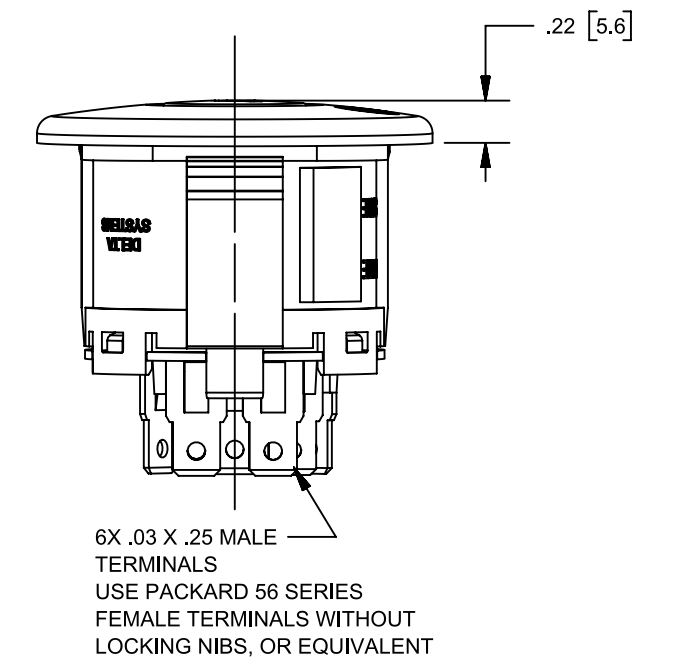
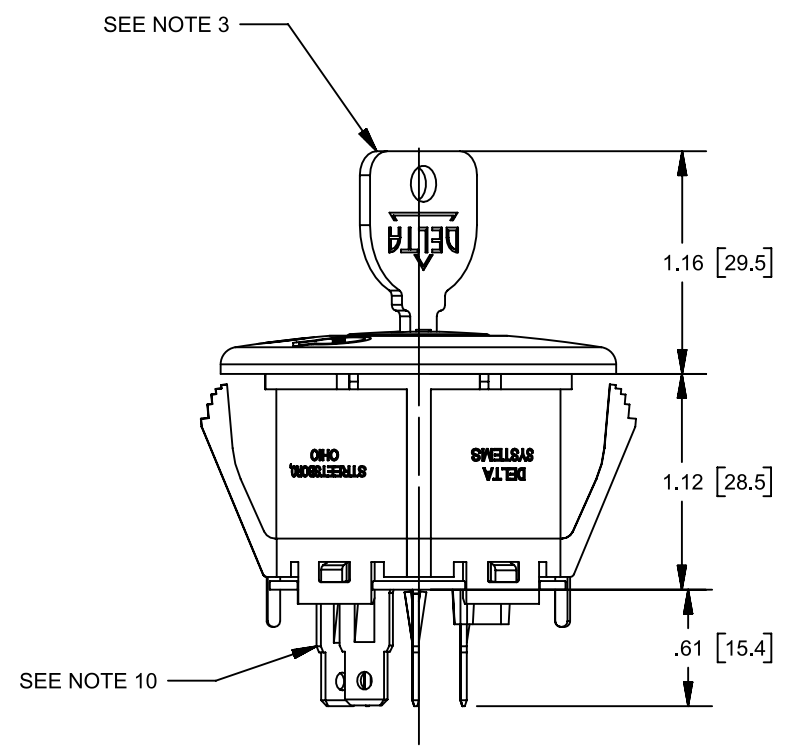
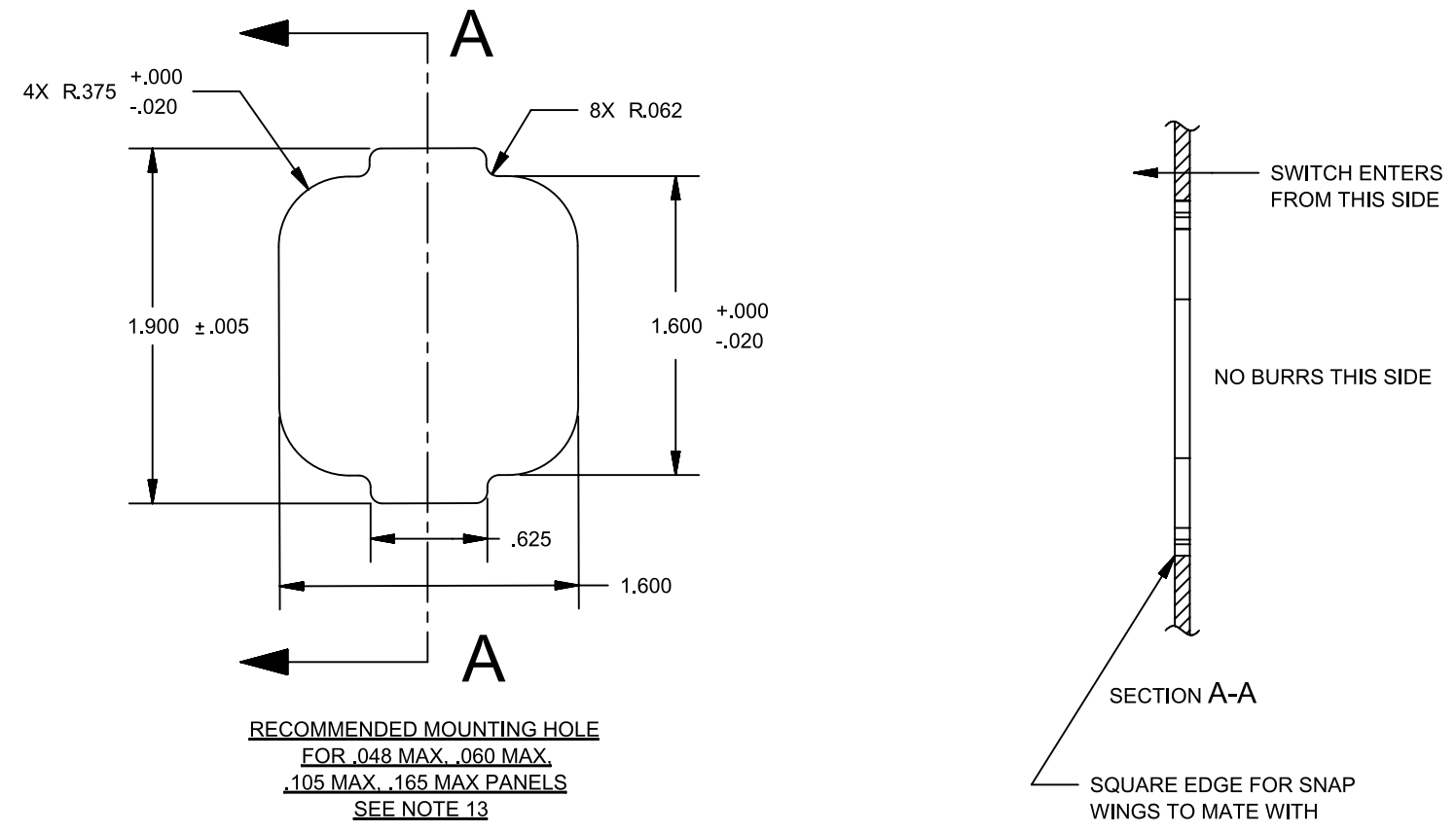
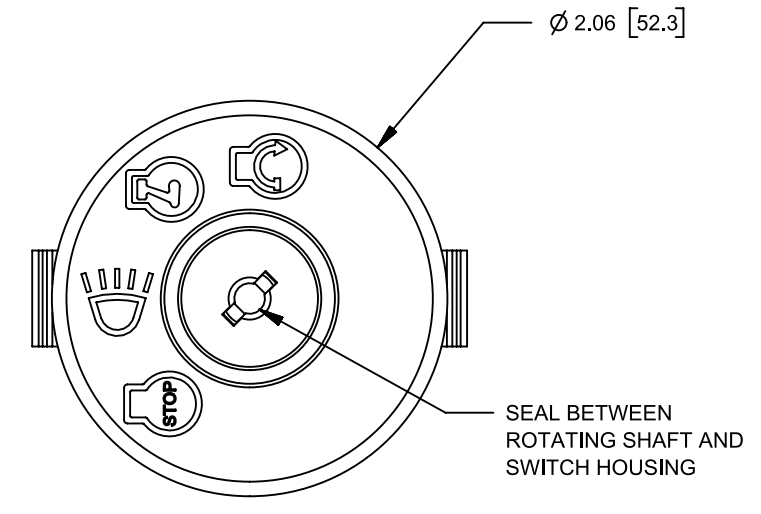


**REVISIONS**

REV.	DESCRIPTION	DATE	INIT
0	INITIAL RELEASE	03/23/21	NMP
1	A-B TERMINAL DISTANCE TOLERANCE REVISED ON ASSEMBLY PRINT	03/16/23	PJC



POSITION	ROTATION	FUNCTION	CONTACT 1	CONTACT 2
1	0°	OFF	M+G	-
2	45°	RUN 1	B+A+L	-
3	95°	RUN 2	B+A	-
4	135°	START	B+A	S1+S2



- NOTES**
- 1) DIM.'S IN BRACKETS [ ] ARE IN MILLIMETERS; MILLIMETER TOLERANCES ARE .X ± .5, .XX ± .15
  - 2) HOUSING IS BLACK POLYPROPYLENE, BACKCOVER IS OLIVE POLYPROPYLENE, TERMINALS ARE BRONZE. GRAPHICS ARE WHITE.
  - 3) KEY IS SHIPPED SEPERATELY. MAXIMUM TORQUE FOR KEY IS 20 IN LBS. USE DELTA KEY ONLY. DELTA STEEL KEY PART# 688S-STD
  - 4) SWITCH STYLE STAMPED ON HOUSING.
  - 5) DATE CODE INDICATING YEAR, MONTH, AND DAY OF MONTH MANUFACTURED STAMPED ON HOUSING
  - 6) SWITCH ELECTRICAL FUNCTIONALITY TESTED AFTER ASSEMBLY.
  - 7) ELECTRICAL RATING, CONTINUOUS: 20A @ 12-14 VDC.  
ELECTRICAL LIFE: 1K CYCLES @ 10 AMPS INDUCTIVE  
10K CYCLES @ 5 AMPS INDUCTIVE  
15K CYCLES @ 5 AMPS RESISTIVE
  - 8) THIS PRODUCT COVERED BY U.S. PATENTS NO. 5252791, OTHER PATENTS APPLIED FOR
  - 9) SWITCH SHOULD NEVER BE MOUNTED IN PANEL WITH THE "B" TERMINAL DIRECTLY ABOVE THE "G" TERMINAL, RELATIVE TO GRAVITY
  - 10) PULL FORCE TO DISLOCATE BACK COVER IS 80 LBS. MINIMUM.
  - 11) POSITION 4 IS MOMENTARY.
  - 12) ALL OTHER CONTACTS COMBINATIONS ARE NOT ALLOWED
  - 13) THICKNESS INCLUDES PAINT AND ANY OTHER COVERINGS APPLIED TO PANEL. OTHER PANEL THICKNESSES NOT RECOMMENDED.
  - 14) INTERPRET THIS DRAWING IN ACCORDANCE WITH ASME Y14.5-2009

PROPRIETARY & CONFIDENTIAL THE INFORMATION CONTAINED IN THIS DRAWING IS THE SOLE PROPERTY OF DELTA SYSTEMS. ANY REPRODUCTION IN PART OR AS A WHOLE WITHOUT THE WRITTEN PERMISSION OF DELTA SYSTEMS IS PROHIBITED.	UNLESS OTHERWISE SPECIFIED DIMENSIONS ARE IN INCHES TOLERANCES ARE: .X ± .1 .XX ± .02 .XXX ± .005 X° ± 1	DRAWN npurdy	DATE 29-Apr-2021	1734 FROST ROAD STREETSBORO, OHIO 44241 330-626-2811 WWW.DELTASYSTEMSINC.COM							
		CHECKED rkawolics	DATE 29-Apr-2021								
		APPROVED dzlatic	DATE 11-Aug-2021								
		MATERIAL SEE NOTE 2	PROJECTED VIEWS ARE 3RD ANGLE								
DELTA SYSTEMS INC. DOES NOT ASSUME ANY LIABILITY ARISING OUT OF THE MISAPPLICATION OF ANY PRODUCT	COMPUTER GENERATED DRAWING - NO MANUAL CHANGES ALLOWED	FINISH SEE NOTE 2	DO NOT SCALE DRAWING	STATUS DS4_Design	TITLE Ignition Switch	SIZE C	DWG. NO. 6900-44P_APP	SCALE NTS	SHEET 1 OF 1	PROJECT NO. 252	REVISION 1