

8

7

6

5

4

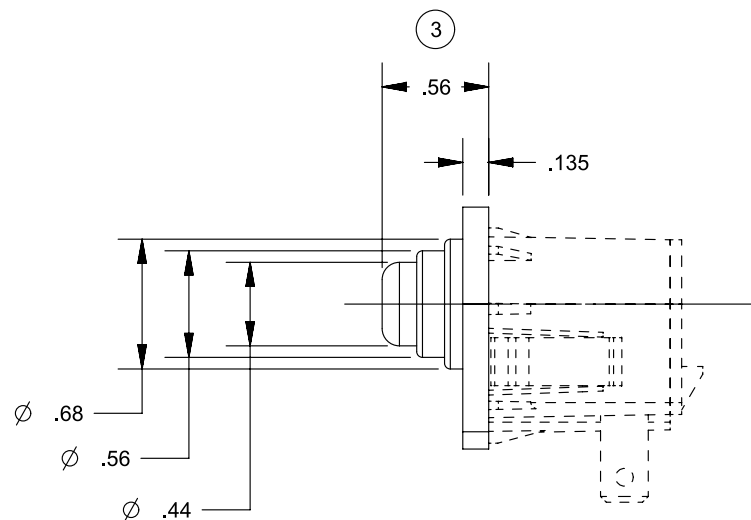
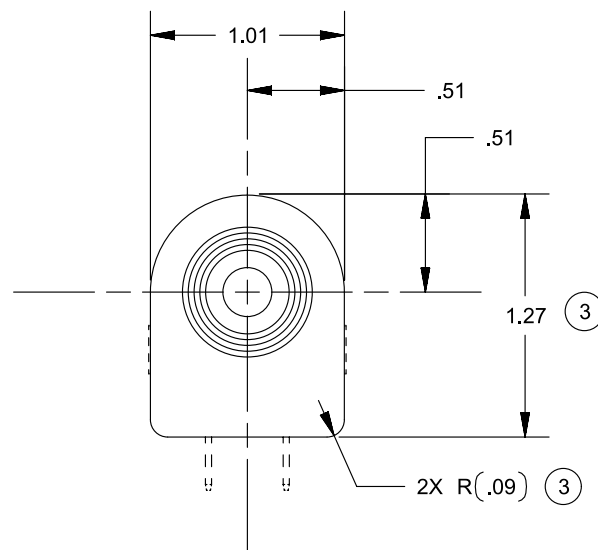
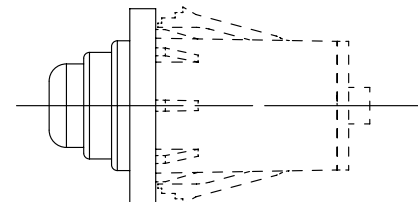
3

2

1

### REVISIONS


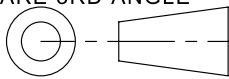
REV.	DESCRIPTION	DATE	INIT
A	INCREASE LIP - ADHERENCE, CR 1310	08/02/99	JH
B	CHANGED DIM. PER CR1342	09/15/99	JH
3	1.27 WAS 1.31, AND .56 WAS .55, 2X (.09) WAS .090, ADDED NOTES 4 & 5	05/29/18	DJK



#### NOTES

- 1) UV STABLE, THERMOPLASTIC ELASTOMER
- 2) WILL FIT ALL 6440 SERIES SWITCHES (SOLD SEPERATELY)
- 3) DIMENSIONS SHOWN WITH COVER INSTALLED ON THE SWITCH

- (3) 4) MUST BE IN COMPLIANCE WITH DIRECTIVE 2011/65/EU OF THE EUROPEAN PARLIAMENT AND THE COUNCIL OF 08 JUNE 2011 ON THE RESTRICTION OF THE USE OF CERTAIN HAZARDOUS SUBSTANCES IN ELECTRICAL AND ELECTRONIC EQUIPMENT (ROHS DIRECTIVE).
- (3) 5) INTERPRET THIS DRAWING IN ACCORDANCE WITH ASME Y14.5-2009

PROPRIETARY & CONFIDENTIAL THE INFORMATION CONTAINED IN THIS DRAWING IS THE SOLE PROPERTY OF DELTA SYSTEMS. ANY REPRODUCTION IN PART OR AS A WHOLE WITHOUT THE WRITTEN PERMISSION OF DELTA SYSTEMS IS PROHIBITED.	UNLESS OTHERWISE SPECIFIED DIMENSIONS ARE IN INCHES TOLERANCES ARE: .X± .1 .XX± .02 .XXX± .005 X°± 1°	DRAWN ajc	DATE 10-Jun-1992	 <b>DELTA SYSTEMS</b> 1734 FROST ROAD STREETSBORO, OHIO 44241 330-626-2811 WWW.DELTASYSTEMSINC.COM
		CHECKED twilliams	DATE 10-Jun-1992	
		APPROVED ikirbawy	DATE 30-May-2018	
		MATERIAL SEE NOTES	PROJECTED VIEWS ARE 3RD ANGLE	
DELTA SYSTEMS INC. DOES NOT ASSUME ANY LIABILITY ARISING OUT OF THE MISAPPLICATION OF ANY PRODUCT	COMPUTER GENERATED DRAWING - NO MANUAL CHANGES ALLOWED	FINISH N/A		TITLE Protective Cover, 6440 Series Switches
		DO NOT SCALE DRAWING	STATUS DS4_Design	SIZE <b>B</b> DWG. NO. 9910_APP SCALE NTS SHEET 1 OF 1 PROJECT NO. EX311 REVISION 3

8

7

6

5

4

3

2

1