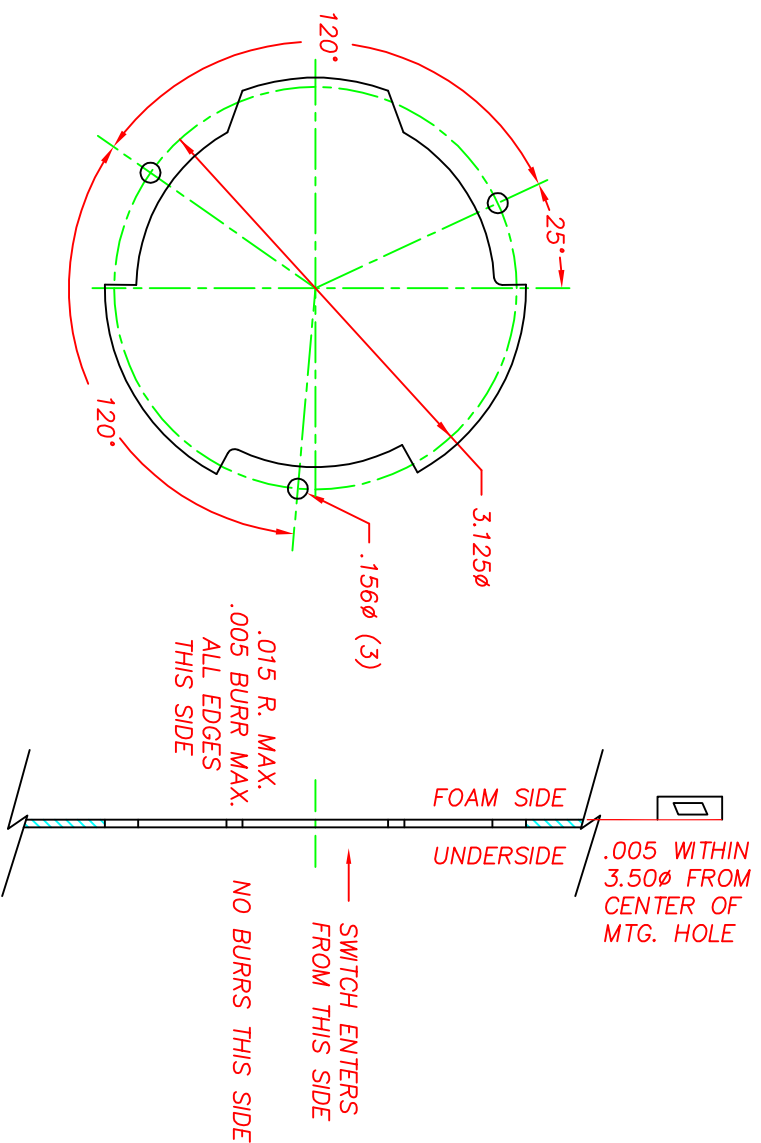
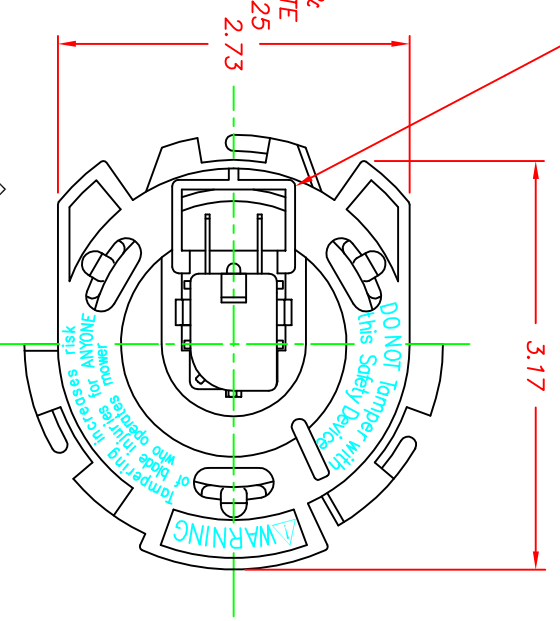
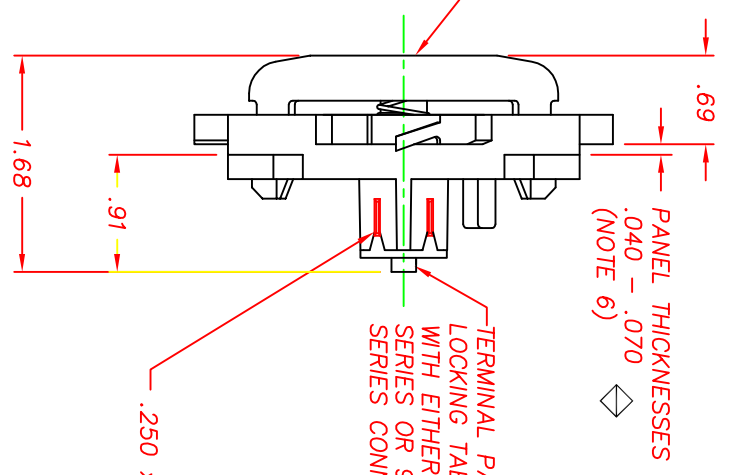
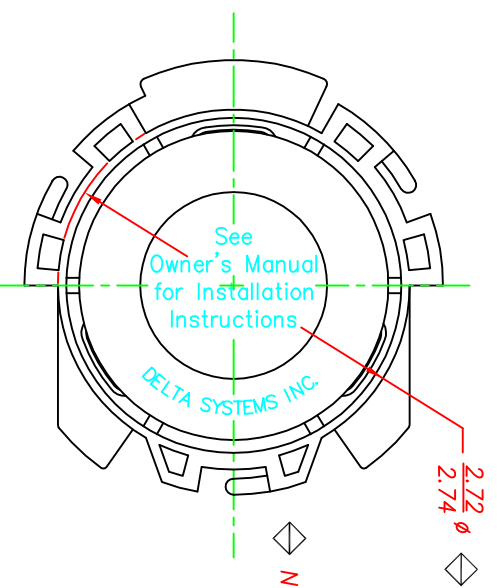
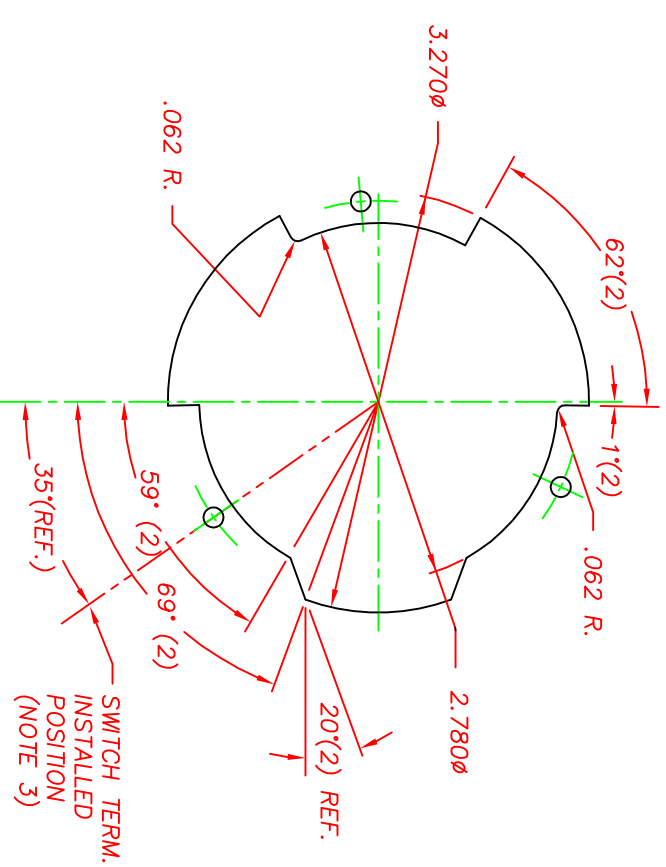


REVISIONS			
A	REV. NOTES & TITLE BLOCK, CR 992	07/17/97	TW
B	CORRECTED TAB HEIGHT VIEW	02/05/01	JH
C	REVISED TAB & CONCTR P/N, CR1627	02/24/06	MA
D	UPDATE MATERIAL CR1908	07/21/10	ERB



RECOMMENDED MOUNTING HOLE
(FOR REFERENCE ONLY)



NOTES:

- 1- .040-.150 MOTION TO MAKE OR BREAK CONTACTS.
- 2- PLASTIC PARTS - POLYPROPYLENE.
TERMINALS - NICKEL PLATED BRASS.
- 3- SWITCH REQUIRES 55° CLOCKWISE ROTATION TO LOCK IN PLACE (VIEWED FROM UNDERSIDE OF SEAT PAN).
- 4- 5 ± 1.5 LBS. ACTUATION FORCE AT .25" DEPRESSION OF ACTUATOR CAP.
- 5- PROPERLY INSTALLED SWITCH FRAME WILL SUPPORT A STATIC LOAD OF 350 LBS. AT 60°F.
- 6- THICKNESS INCLUDES PAINT AND/OR ANY OTHER LAYERS APPLIED BETWEEN SWITCH AND PANEL.
- 7- DATE CODE INDICATING YEAR, MONTH, AND DAY OF MONTH MANUFACTURED STAMPED ON HOUSING.
- 8- INTEGRITY OF WELD & SWITCH FUNCTIONALITY TESTED AFTER ASSEMBLY.
- 9- SWITCH IS BLACK. ACTUATOR CAP & FRAME ARE GRAY.
- 10- DELTA IS RESPONSIBLE FOR COMPLIANCE TO THIS SPECIFICATION. THE FUNCTION AND ADEQUACY OF THE SAFETY "SYSTEM" IN WHICH THIS COMPONENT IS USED IS THE RESPONSIBILITY OF THOSE THAT DESIGN AND BUILD THE SYSTEM (INCLUDING BUT NOT LIMITED TO THE SEAT DESIGN, SWITCH LOCATION, FOAM DENSITY AND DESIGN).
- 11- THIS PRODUCT COVERED BY THE FOLLOWING U.S. PATENT; 5,424,502.

DELTA SYSTEMS, INC. DOES NOT ASSUME ANY LIABILITY ARISING OUT OF THE MISAPPLICATION OF ANY PRODUCT		UNLESS OTHERWISE SPECIFIED DIMENSIONS ARE IN INCHES TOLERANCES ARE .XXX .005 ANG 1°	
COMPUTER GENERATED DRAWING - NO MANUAL CHANGES ALLOWED	DO NOT SCALE DRAWING	DELTA SYSTEMS INC. STREETSBORO, OHIO 44241	TITLE N.O. TWST LOCK MOUNT SEAT SWITCH W/HELPER SPRING
DRAWN LMM 11/13/96	DATE 11/13/96	PROJECT NO. 6500-03	SCALE FULL
CHECKED TW 11/14/96	DATE 11/14/96	FINISH SEE NOTE 9	REV D