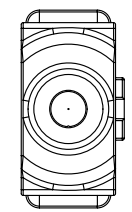


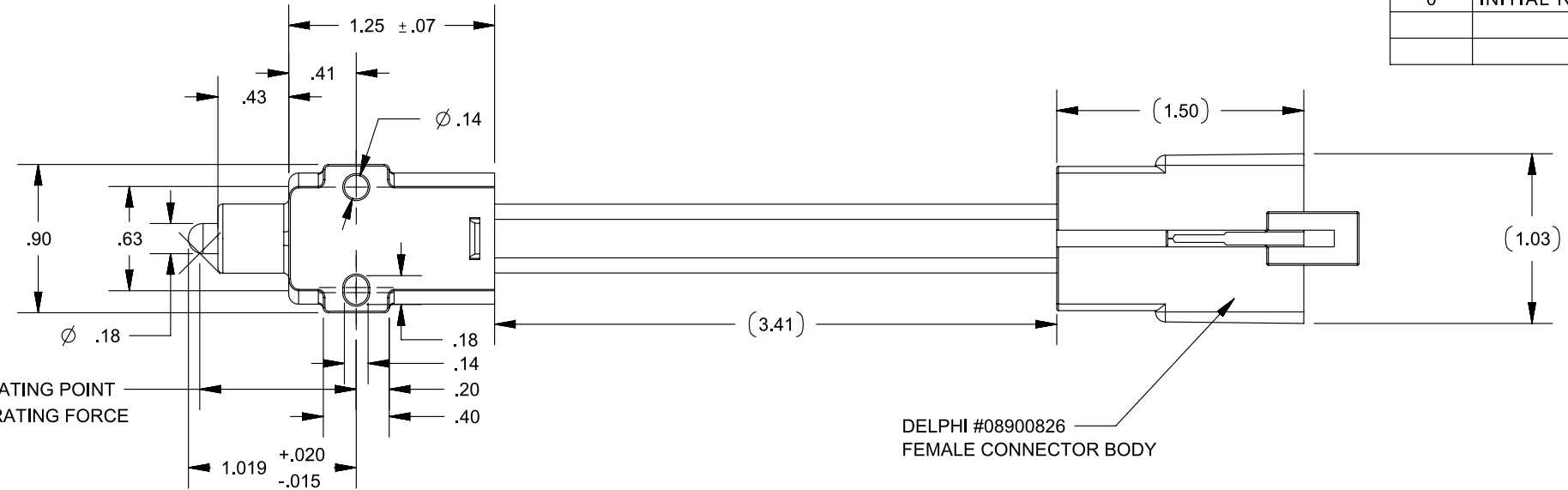
8 7 6 5 4 3 2 1

REVISIONS

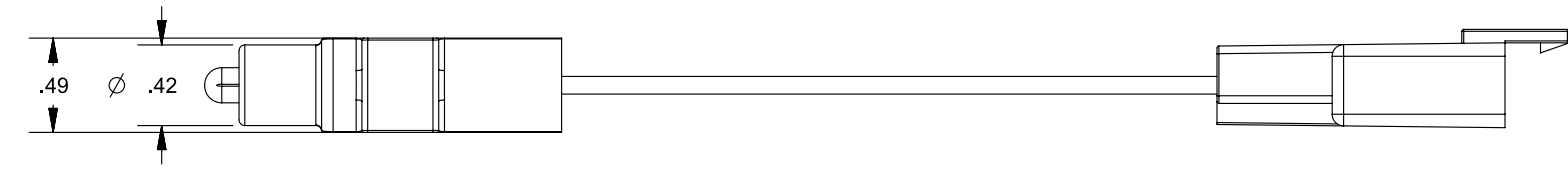
REV.	DESCRIPTION	DATE	INIT
0	INITIAL RELEASE	10/08/14	MJS



1.000 - .900 OPERATING POINT
2.5 LBS MAX OPERATING FORCE



DELPHI #08900826
FEMALE CONNECTOR BODY



NOTES

- 1-INITIAL VOLTAGE DROP MEASURED ACROSS TERMINALS IS 100 mV MAX MAX AT 3 AMPS WITH 12-14 VDC APPLIED
- 2-SWITCH CIRCUIT WHEN OPEN WILL WITHSTAND 500 VDS WITH A MAX OF 5 mA LEAKAGE (100K OHMS/MIN).
- 3-THE SWITCH AND LEADS WILL MEET AN INGRESS PROTECTION RATING OF IP65
- 4-SWITCH HOUSING AND PLUNGER ARE CONSTRUCTED OF UV STABILIZED ACETAL COPOLYMER WITH 12% GLASS
COLOR: BLACK
- 5-ELECTRICAL RATING: 250 MILLIAMPS @ 12-14 VDC
LIFE = 100,000 CYCLES INDUCTIVE
- 6-INTERPRET THIS DRAWING IN ACCORDANCE WITH ASME Y14.5-2009

PROPRIETARY & CONFIDENTIAL THE INFORMATION CONTAINED IN THIS DRAWING IS THE SOLE PROPERTY OF DELTA SYSTEMS. ANY REPRODUCTION IN PART OR AS A WHOLE WITHOUT THE WRITTEN PERMISSION OF DELTA SYSTEMS IS PROHIBITED.	UNLESS OTHERWISE SPECIFIED DIMENSIONS ARE IN INCHES TOLERANCES ARE: .X± .1 .XX± .02 .XXX± .005 X°± 1°	DRAWN mschwenning	DATE 08-Oct-2014	1734 FROST ROAD STREETSBORO, OHIO 44241 330-626-2811 WWW.DELTASYSTEMSINC.COM	
		CHECKED bkirkman	DATE 17-Dec-2014		
APPROVED ikirbawy	DATE 22-Jun-2015	MATERIAL SEE NOTES	PROJECTED VIEWS ARE 3RD ANGLE 		
DELTA SYSTEMS INC. DOES NOT ASSUME ANY LIABILITY ARISING OUT OF THE MISAPPLICATION OF ANY PRODUCT	COMPUTER GENERATED DRAWING - NO MANUAL CHANGES ALLOWED	FINISH SEE NOTES	DO NOT SCALE DRAWING	STATUS DS4_Design	TITLE Walker Universal Switch N.O. Application
		SIZE B	DWG. NO. 7081-46_APP		
		SCALE NTS	SHEET 1 OF 1	PROJECT NO. EX0257	REVISION 0

8 7 6 5 4 3 2 1