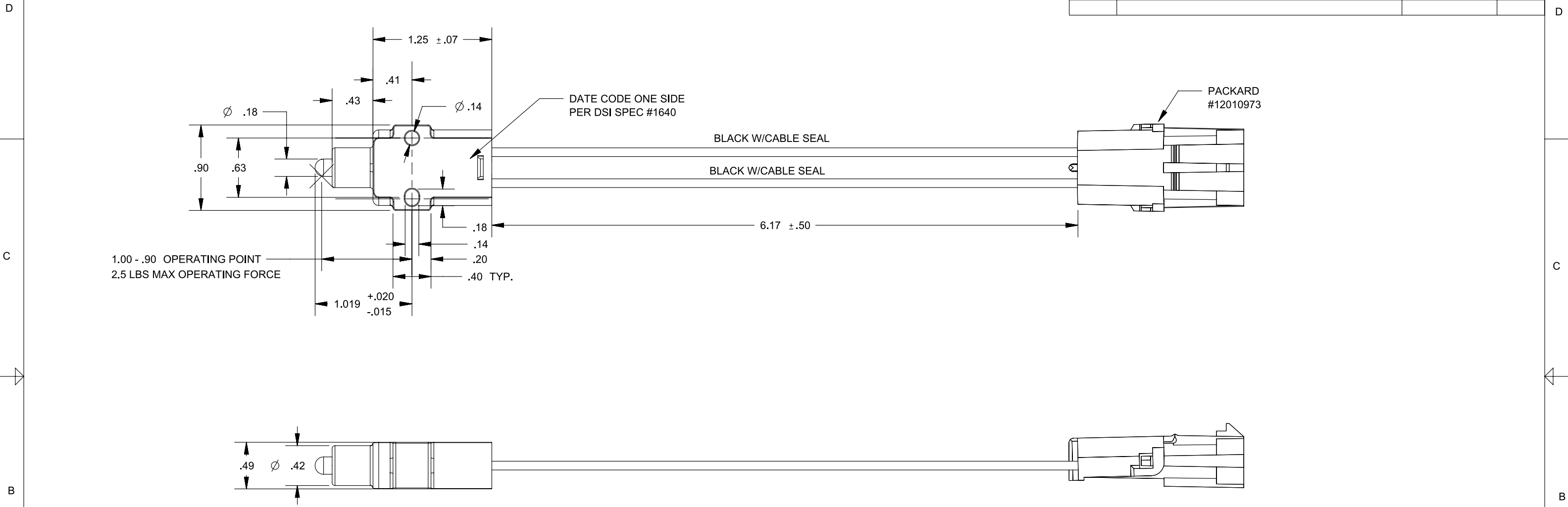


8 7 6 5 4 3 2 1

REVISIONS

REV.	DESCRIPTION	DATE	INIT
0	INITIAL RELEASE	11/25/14	MJS



- NOTES**
- 1) INITIAL VOLTAGE DROP MEASURED ACROSS TERMINALS IS 100mV MAX AT 3 AMPS WITH 12-15 VDC APPLIED
 - 2) SWITCH CIRCUIT WHEN OPEN WILL WITHSTAND 500 VDC WITH A MAX OF 5mA LEAKAGE (100K OHMS MIN)
 - 3) THE SWITCH AND LEADS WILL WITHSTAND 10" Hg VACUUM WHEN SUBMERGED IN WASTER PER DSI "SALT WATER TEST"
 - 4) SWITCH HOUSING AND PLUNGER ARE CONSTRUCTED OF UV STABILIZED ACETAL COPOLYMER WITH 12% GLASS
COLOR: BLACK
 - 5) ELECTRICAL RATING: 3A@12-14VDC
LIFE = 100,000 CYCLES RESISTIVE
 - 6) INTERPRET THIS DRAWING IN ACCORDANCE WITH ASME Y14.5-2009

PROPRIETARY & CONFIDENTIAL
THE INFORMATION CONTAINED IN
THIS DRAWING IS THE SOLE
PROPERTY OF DELTA SYSTEMS.
ANY REPRODUCTION IN PART OR
AS A WHOLE WITHOUT THE
WRITTEN PERMISSION OF DELTA
SYSTEMS IS PROHIBITED.

DELTA SYSTEMS INC. DOES NOT
ASSUME ANY LIABILITY ARISING
OUT OF THE MISAPPLICATION OF
ANY PRODUCT

UNLESS OTHERWISE
SPECIFIED DIMENSIONS
ARE IN INCHES
TOLERANCES ARE:

.X± .1
.XX± .02
.XXX± .005
X°± 1°

COMPUTER GENERATED
DRAWING - NO MANUAL
CHANGES ALLOWED

DRAWN mschwenning	DATE 25-Nov-2014
CHECKED bkirkman	DATE 16-Dec-2014
APPROVED ikirbawy	DATE 18-Jun-2015
MATERIAL N/A	PROJECTED VIEWS ARE 3RD ANGLE
FINISH N/A	
DO NOT SCALE DRAWING	STATUS DS4_Design

DELTA SYSTEMS
1734 FROST ROAD
STREETSBORO, OHIO 44241
330-626-2811
WWW.DELTASYSTEMSINC.COM

TITLE
Universal Switch Normally Open
Application

SIZE
B

DWG. NO.
7081-25_APP

SCALE
NTS

SHEET
1 OF 1

PROJECT NO.
EX0257

REVISION
0

8 7 6 5 4 3 2 1