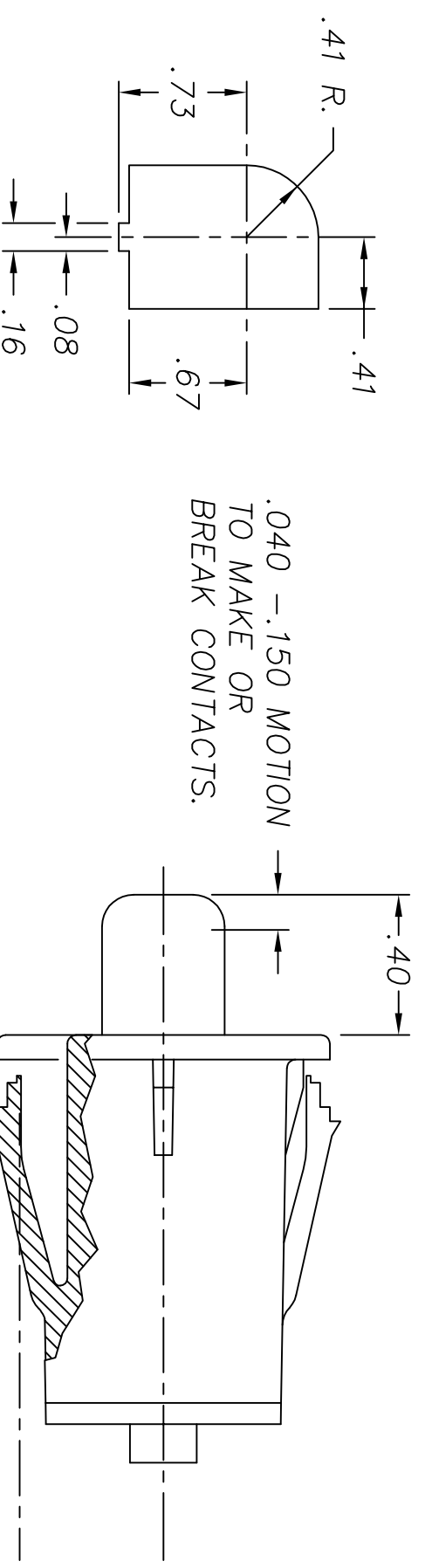
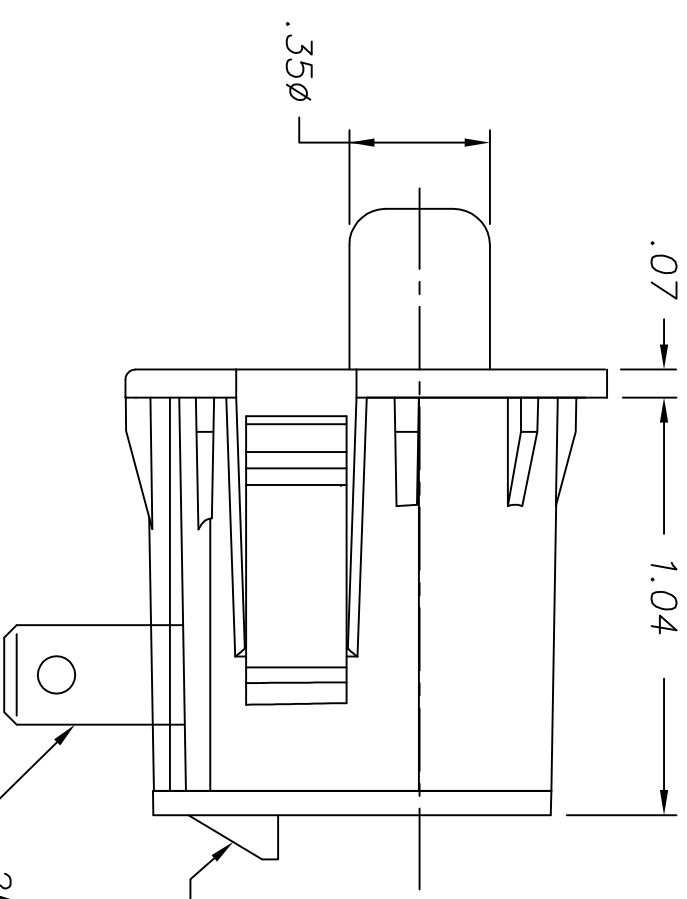
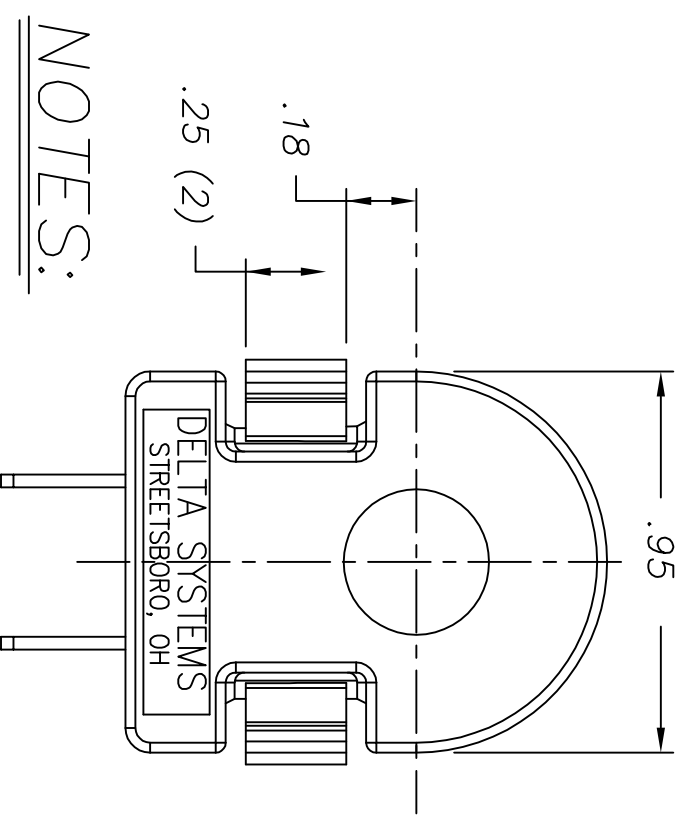


REVISIONS			
~	NETWORKED DRAWING	9/29/99	JH
A	ADDED WING MOD., CR1427	11/09/02	MA
B	REVISED TAB & CONCTR P/N, CR1627	02/24/06	MA
C	REMOVED COLOR IDENTIFIER, CR1719	04/30/08	MA
D	UPDATE MATERIAL CR1908	07/21/10	ERB

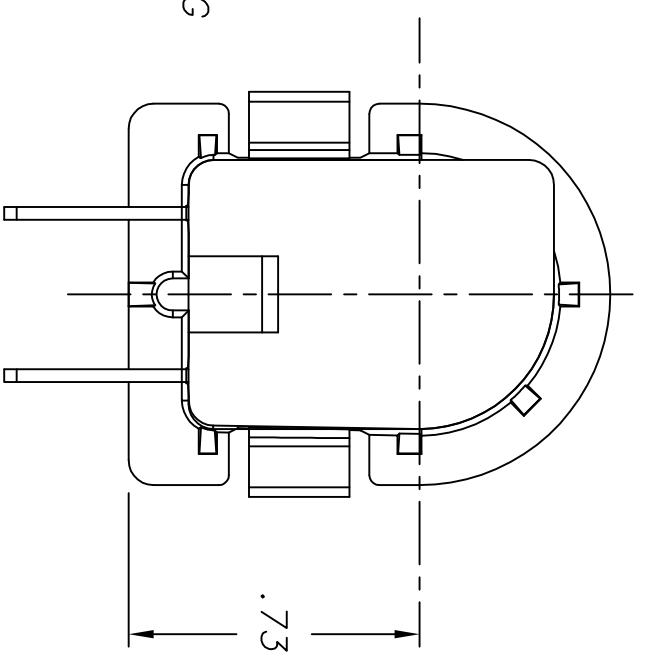


**SUGGESTED MOUNTING HOLE**  
(SCALE: FULL)

SNAP WINGS TO ACCOMMODATE PANEL THICKNESSES OF .055, .115, AND .140, INCLUDING PAINT AND DECALS.



TERMINAL PATTERN & LOCKING TAB TO MATE WITH EITHER DSI 96525 SERIES OR 96526 SERIES CONNECTORS



**NOTES:**

- 1 - PLASTIC PARTS ARE POLYPROPYLENE. CONTACT IS BERYLLIUM COPPER. TERMINALS ARE NICKEL-PLATED BRASS.
- 2 - HOUSING IS OLIVE, PLUNGER AND BACK COVER ARE BLACK.
- 3 - DATE CODE INDICATING YEAR, MONTH, AND DAY OF MONTH MANUFACTURED STAMPED ON HOUSING.
- 4 - INTEGRITY OF WELD & SWITCH FUNCTIONALITY TESTED AFTER ASSEMBLY.
- 5 - THIS PRODUCT COVERED BY THE FOLLOWING U.S. PATENT; 4,812,604. OTHER PATENTS APPLIED FOR.

DELTA SYSTEMS, INC. DOES NOT ASSUME ANY LIABILITY ARISING OUT OF THE MISAPPLICATION OF ANY PRODUCT

COMPUTER GENERATED DRAWING - NO MANUAL CHANGES ALLOWED

UNLESS OTHERWISE SPECIFIED DIMENSIONS ARE IN INCHES TOLERANCES ARE:	FINISH
.xxx± .02 .xxx± .005 ANG± 1°	NOTE 2

<b>DELTA SYSTEMS INC.</b> STRETSBORO, OHIO 44241	
TITLE: SNAP-MOUNT SWITCH NORMALLY OPEN	
SIZE: <b>B</b>	DWG. NO.: <b>6440-14</b>
SCALE: <b>2X</b>	PROJECT NO.: <b>EX311</b>
	REV: <b>D</b>