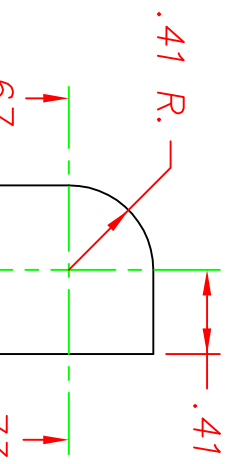
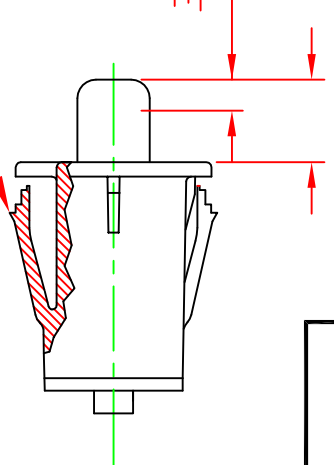


REVISIONS

F	INCREASE LIP - ADHERENCE, CR 1310	08/02/99	JH
G	CHANGED DIM. PER CR1342	9/15/99	JH
H	ADDED WING MOD., CR1427	11/09/02	MA
J	REVISED CONNECTOR P/N, CR1627	02/24/06	MA
K	REVISE TO CAPABILITY, CN2225	01/04/10	MEL
L	UPDATE MATERIAL CR1908	07/21/10	ERB

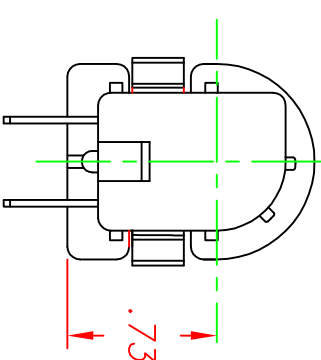
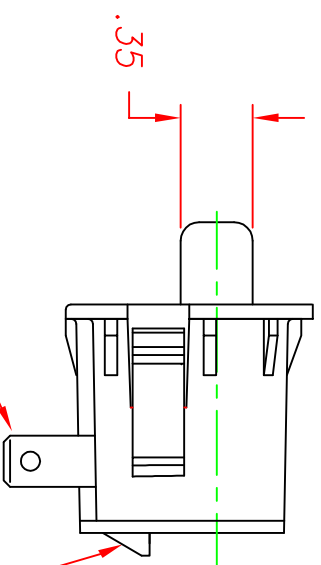
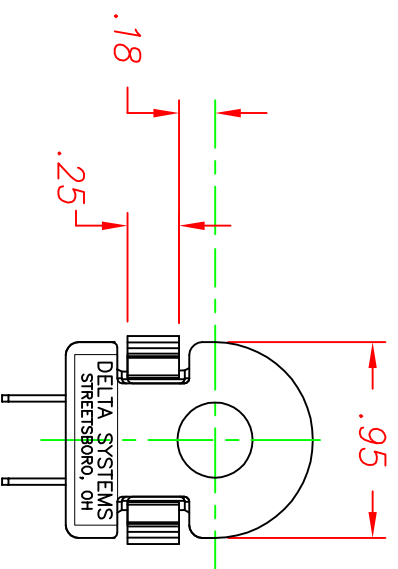


.40  
 .040 - .150  
 MOTION TO MAKE  
 OR BREAK  
 CONTACTS

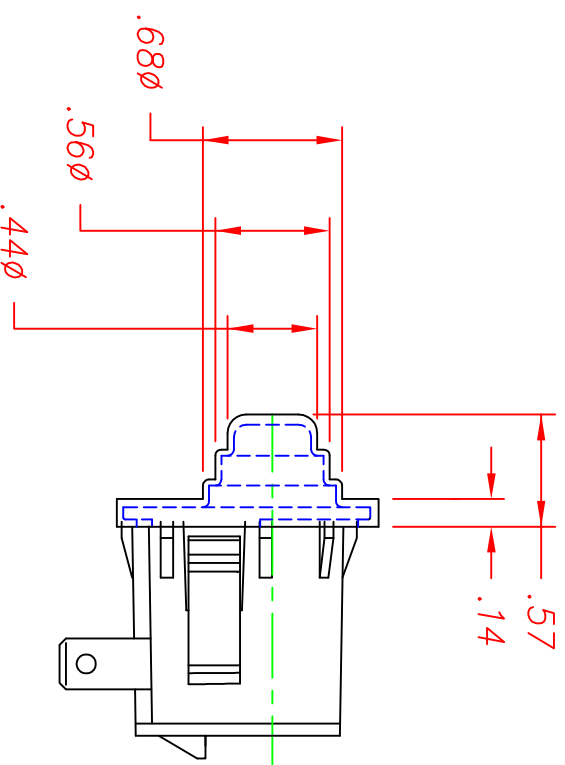
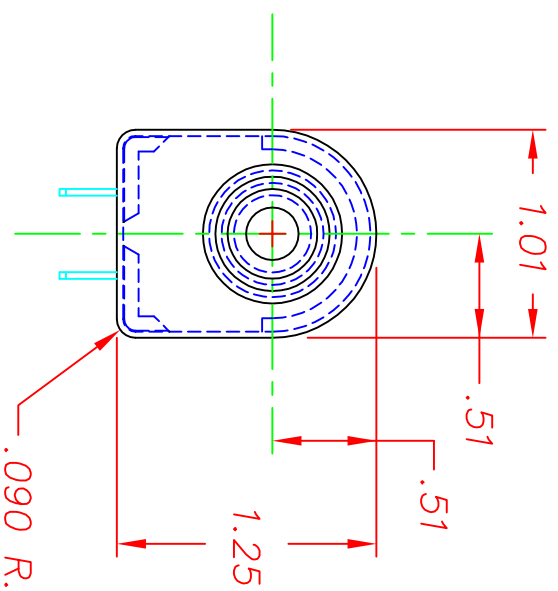


WITH COVER ON SWITCH, SNAP WINGS  
 TO ACCOMMODATE PANEL  
 THICKNESSES OF .060 AND .085  
 INCLUDING PAINT AND DECALS.

SUGGESTED MOUNTING HOLE



.25 x .032 MALE  
 BLADE TERMINALS (2)  
 TERMINAL PATTERN & LOCKING  
 TAB TO MATE WITH EITHER  
 DSI 96525 SERIES OR 96526  
 SERIES CONNECTORS



DIM.'S SHOWN HERE ARE WITH COVER INSTALLED ON SWITCH

Δ DESIGNATES CRITICAL CHARACTERISTICS

NOTES:

- 1-PLASTIC PARTS - POLYPROPYLENE TERMINALS - NICKEL PLATED BRASS. BOOT - THERMOPLASTIC ELASTOMER.
- 2-DATE CODE INDICATING YEAR, MONTH, AND DAY OF MONTH MANUFACTURED STAMPED ON HOUSING.
- 3-INTEGRITY OF WELD AND SWITCH FUNCTIONALITY TESTED AFTER ASSEMBLY.
- 4-THIS PRODUCT COVERED BY THE FOLLOWING U.S. PATENT; 4,812,604. OTHER PATENTS APPLIED FOR.

DELTA SYSTEMS, INC. DOES NOT ASSUME ANY LIABILITY ARISING OUT OF THE MISAPPLICATION OF ANY PRODUCT

UNLESS OTHERWISE SPECIFIED DIMENSIONS ARE IN INCHES TOLERANCES ARE:  
 .XX± .02 .XXX± .005 ANG± ~

DO NOT SCALE DRAWING

DRAWN	DATE	06/10/92
AJC		
CHECKED	DATE	06/10/92
TW		
MATERIAL	NOTE 1	
FINISH	BLACK	

DELTA SYSTEMS INC.  
 STREETSBORO, OHIO 44241

TITLE: SNAP-MOUNT SWITCH  
 NORMALLY OPEN

SIZE	DWG. NO.	PROJECT NO.	REV
B	6440-11	EX311	L
SCALE	SHEET	OF	
2X	1	1	