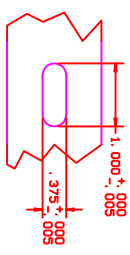
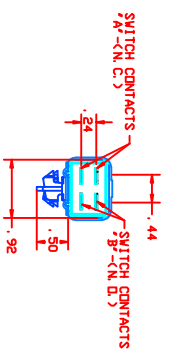
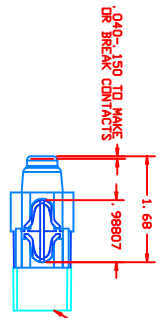
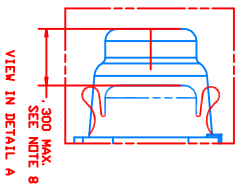
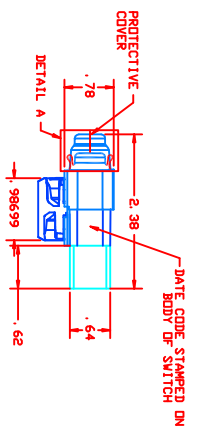


REVISIONS		
-	INITIAL RELEASE CR1803	01/05/10 BRJ
A	UPDATED MATERIAL CR1508	02/21/10 BRJ
B	DETAIL A, NOTE B, 9) CR1844	09/15/11 BRJ



RECOMMENDED MOUNTING SLOT SWITCH WILL ACCEPT .150 IN PANEL DECATS, ETC.
 SQUARE EDGE REQUIRED ON WING RETENTION SIDE OF SLOT



- NOTES:
- 1-USE STAMPED ON ALL NORMALLY CLOSED TERMINALS
 - 2-TERMINAL PINS MUST BE PLATED
 - 3-MATERIAL PROTECTIVE COVER, SANITIZING THERMOPLASTIC ELASTOMER
 - 4-DATE CODE INDICATING YEAR, MONTH, AND DAY OF MANUFACTURE STAMPED ON HOUSING
 - 5-INTERFERENCE OF WELD & SWITCH FUNCTIONALITY TESTED AFTER ASSEMBLY
 - 6-THIS PRODUCT IS REGISTERED WITH THE U.S. PATENT OFFICE, PATENT NO. 6,221,816
 - 7-DO NOT BREAK CONTACT BEFORE THE "ON" POLE MAKES CONTACT
 - 8-MAXIMUM RECOMMENDED ACTUATION DISTANCE FROM REST IS .300 DUE TO DEFORMING OF SWITCH IS RATED "IP-53"

DELTA SYSTEMS, INC. DOES NOT ASSUME ANY LIABILITY ARISING OUT OF THE MISAPPLICATION OF ANY PRODUCT			
DELTA SYSTEMS, INC. STREETSBORO, OHIO 44871		TITLE: N. B. AN S. PLUNGER SWITCH WITH PROTECTIVE COVER PART NO: 6400-94 REV: EX00997	
COMPUTER GENERATED DRAWING - NO MANUAL CHANGES ALLOWED		DATE: 09/15/11 TIME: 14:58	
DIM NOT SCALE DRAWING		SCALE: N/A	