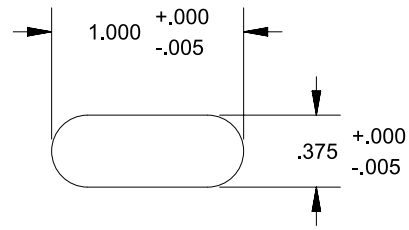
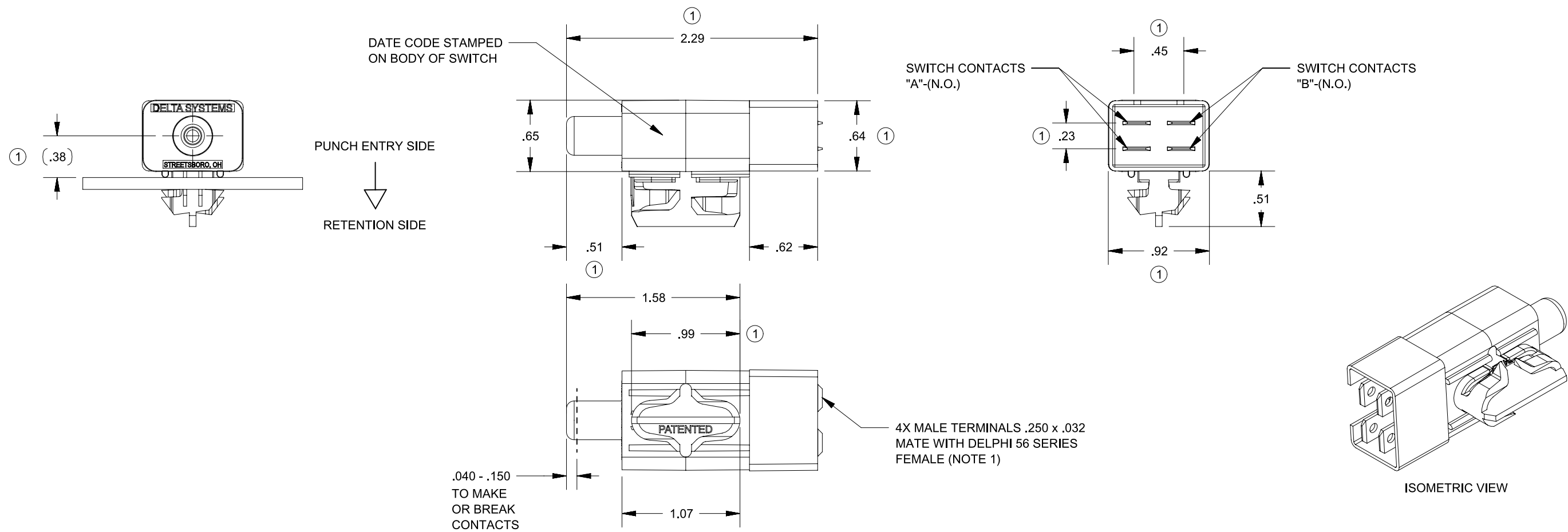


# REVISIONS

REV.	DESCRIPTION	DATE	INIT
~	RELEASED FROM EX, CR1221	10/22/98	JH
1	MIGRATED TO NX, UPDATED DIMENSIONS, ADDED ASME NOTE, ECO313	10/06/15	BMS



RECOMMENDED MOUNTING SLOT SWITCH WILL ACCEPT  
.108 & .170 PANEL THICKNESSES INCLUDING PAINT, DECALS, ETC  
\*SQUARE EDGE REQUIRED ON WING RETENTION SIDE OF SLOT



- NOTES
- 1) TERMINALS ARE NICKEL PLATED
  - 2) PLASTIC PARTS ARE POLYPROPYLENE
  - 3) DATE CODE INDICATING YEAR, MONTH, AND DAY OF MONTH MANUFACTURED MARKED ON HOUSING
  - 4) INTEGRITY OF WELD & SWITCH FUNCTIONALITY TESTED AFTER ASSEMBLY
  - 5) INTERPRET THIS DRAWING IN ACCORDANCE WITH ASME Y14.5-2009

PROPRIETARY & CONFIDENTIAL THE INFORMATION CONTAINED IN THIS DRAWING IS THE SOLE PROPERTY OF DELTA SYSTEMS. ANY REPRODUCTION IN PART OR AS A WHOLE WITHOUT THE WRITTEN PERMISSION OF DELTA SYSTEMS IS PROHIBITED.	UNLESS OTHERWISE SPECIFIED DIMENSIONS ARE IN INCHES TOLERANCES ARE: .X± .1 .XX± .02 .XXX± .005 X°± 1°		DRAWN Imm	DATE 16-Oct-1996	<b>DELTA SYSTEMS</b> 1734 FROST ROAD STREETSBORO, OHIO 44241 330-626-2811 WWW.DELTASYSTEMSINC.COM
	DELTA SYSTEMS INC. DOES NOT ASSUME ANY LIABILITY ARISING OUT OF THE MISAPPLICATION OF ANY PRODUCT		CHECKED twilliams	DATE 17-Oct-1996	
COMPUTER GENERATED DRAWING - NO MANUAL CHANGES ALLOWED		APPROVED ikirbawy	DATE 04-Nov-2015	PROJECTED VIEWS ARE 3RD ANGLE 	
		MATERIAL AS NOTED	HSG & COVER - BLACK PLUNGER - GRAY	STATUS DS4_Design	TITLE N.O./N.O. Plunger Switch (Double Pole)
		SIZE B	SCALE NTS	DWG. NO. 6400-85_APP	SHEET 1 OF 1
				PROJECT NO. EX335	REVISION 1