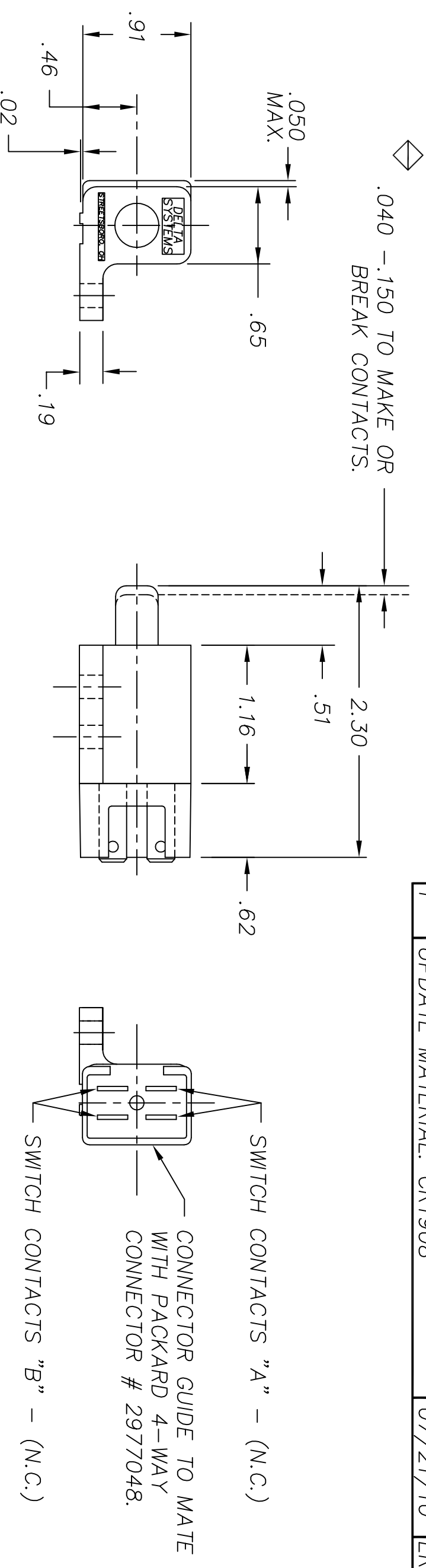


REVISIONS			
D	ADDED NAME TO HOUSING, CR1017	08/19/97	TW
E	REMOVED BLUE IDENTIFIER, CR1719	04/30/08	MA
F	UPDATE MATERIAL. CR1908	07/21/10	ERB



NOTES:

- 1-"NC" STAMPED ON ALL NORMALLY CLOSED TERMINALS.
- 2-TERMINALS ARE NICKEL PLATED
- 3-PLASTIC PARTS ARE POLYPROPYLENE.
- 4-HOUSING AND PLUNGER ARE GRAY, BACK COVER IS OLIVE.
- 5-DATE CODE INDICATING YEAR, MONTH, & DAY OF MONTH MANUFACTURED STAMPED ON HOUSING.
- 6-INTEGRITY OF WELD & SWITCH FUNCTIONALITY TESTED AFTER ASSEMBLY.
- 7-THIS PRODUCT COVERED BY THE FOLLOWING U.S. PATENT; 4,812,604. OTHER PATENTS APPLIED FOR.

DELTA SYSTEMS, INC. DOES NOT ASSUME ANY LIABILITY ARISING OUT OF THE MISAPPLICATION OF ANY PRODUCT		UNLESS OTHERWISE SPECIFIED DIMENSIONS ARE IN INCHES TOLERANCES ARE: .xxx± .02 .xxx± .010 ANG±	
COMPUTER GENERATED DRAWING - NO MANUAL CHANGES ALLOWED	DO NOT SCALE DRAWING	DRAWN AJC	DATE 06/08/92
CHECKED TW	DATE 06/08/92	MATERIAL AS NOTED	FINISH AS NOTED
TITLE N.C./N.C. PLUNGER SWITCH (DOUBLE POLE)		SIZE B	
SCALE FULL		DWG. NO. 6400-03	PROJECT NO. EX311
DELTA SYSTEMS INC. STREETSBORO, OHIO 44241		REV F	DATE 07/21/10