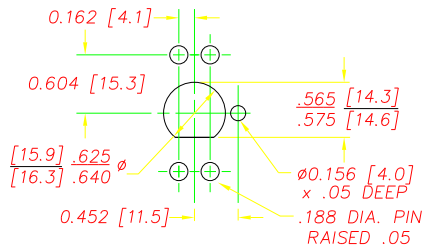
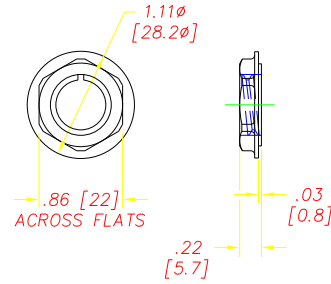


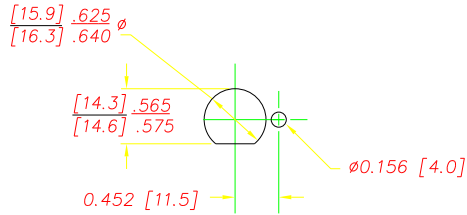
USE 2 REACTION PINS, TOP OR BOTTOM



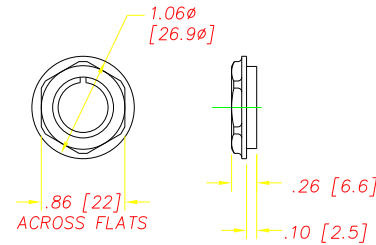
RECOMMENDED PLASTIC PANEL MOUNTING HOLE (VIEW FROM BACK OF PANEL)



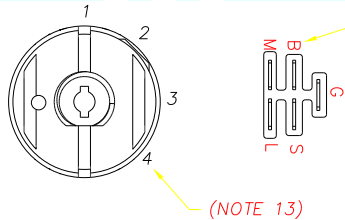
NUT DETAILS (DSI P/N 9256) PANEL THICKNESS RANGE .07 TO .19



RECOMMENDED METAL PANEL MOUNTING HOLE (VIEW FROM BACK OF PANEL)



NUT DETAILS (DSI# 9252) MATES WITH ACCURATE MOLD & DIE CO. BEZEL# 121 PANEL THICKNESS RANGE .05 TO .17



(NOTE 11) ⚠

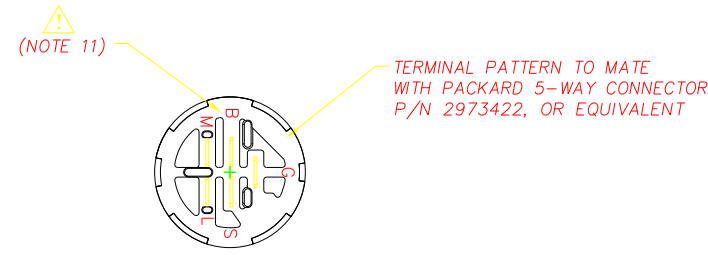
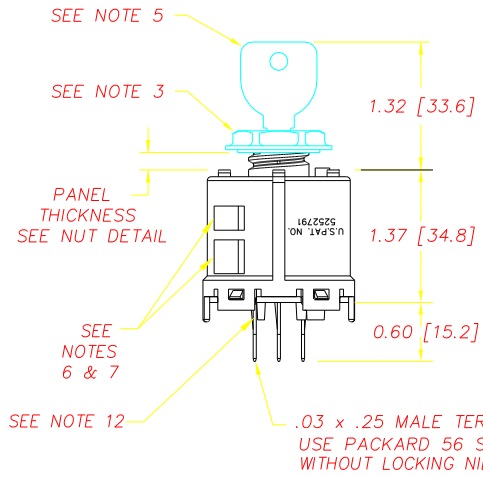
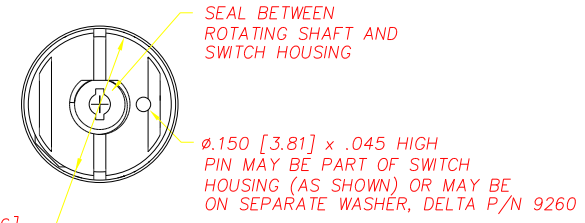
POSITION	ROTATION	FUNCTION	CONTACT
1	0°	OFF	G+M
2	45°	RUN/LIGHTS	L+B
3	95°	RUN	OPEN
4	135°	START	S+B

NOTES

- 1-DIM.'S IN BRACKET [] ARE IN MILLIMETERS; MILLIMETER TOLERANCES ARE .X± .5, .XX± .15.
- 2-PLASTIC PARTS ARE DELTON™ (BLACK). TERMINALS ARE BRONZE.
- 3-7/8 HEX NUT IS SHIPPED SEPARATELY.
- 4-RECOMMENDED ASSEMBLY TORQUE IS 26 IN-LBS TO 36 IN-LBS.
- 5-AUTOMATIC SHUTOFF TORQUE SCREWDRIVER MAXIMUM SPEED IS 300 RPM.
- 6-KEY IS SHIPPED SEPARATELY. MAXIMUM TORQUE FOR KEY IS 20 IN LBS. USE DELTA KEY ONLY. DELTA STEEL KEY PART# 688S-STD.
- 7-SWITCH STYLE STAMPED ON HOUSING.
- 8-DATE CODE INDICATING YEAR, MONTH, AND DAY OF MONTH MANUFACTURED STAMPED ON HOUSING.
- 9-SWITCH ELECTRICAL FUNCTIONALITY TESTED AFTER ASSEMBLY.
- 10-ELECTRICAL RATING, CONTINUOUS: 20A @ 12-14 VDC. ELECTRICAL LIFE: 5K CYCLES @ 10 AMPS INDUCTIVE. 10K CYCLES @ 5 AMPS INDUCTIVE. 50K CYCLES @ 5 AMPS RESISTIVE.
- 11-THIS PRODUCT COVERED BY THE FOLLOWING U.S. PATENT: 5,252,791. OTHER PATENTS APPLIED FOR.
- 12-SWITCH SHOULD NEVER BE MOUNTED IN PANEL WITH THE "B" TERMINAL DIRECTLY ABOVE THE "G" TERMINAL, RELATIVE TO GRAVITY.
- 13-PULL FORCE TO DISLOCATE BACK COVER IS 80 LBS. MINIMUM.
- 14-POSITION 4 IS MOMENTARY
- 15-ALL OTHER CONTACT COMBINATIONS ARE NOT ALLOWED.



REVISIONS			
A	REVISED BACK COVER, CR 1018	08/15/97	TW
B	REVISED BACK COVER, CR 1046	9/17/97	JH
C	ADDED CONNECTOR STOP, CR1215	12/11/98	JH
D	REM'D CORE IN BACKCOVER, CR 1306	06/04/99	JH
E	UPDATE NOTE, MATERIAL IS BRONZE	7/13/99	ML
F	ADDED TAPER PER CR1334	9/9/99	JH
G	DEFINED CRITICAL CHARACTERISTICS	05/08/00	JH
H	DIM .62 [15.7] TO .60 [15.2], CN0554	09/09/02	JG
J	REMOVE CRITICAL DIM., CR 1477	06/02/03	JH



DELTA SYSTEMS, INC. DOES NOT ASSUME ANY LIABILITY ARISING OUT OF THE MISAPPLICATION OF ANY PRODUCT		DRAWN: LMM DATE: 05/20/97 CHECKED: TW DATE: 05/23/97	DELTA SYSTEMS INC. STREETSBORO, OHIO 44241
COMPUTER GENERATED DRAWING - NO MANUAL CHANGES ALLOWED		MATERIAL: SEE NOTE 2	TITLE: IGNITION SWITCH 4 - POSITION
UNLESS OTHERWISE SPECIFIED DIMENSIONS ARE IN INCHES TOLERANCES ARE: .XX± .02 .XXX± .005 ANG± 1°		FINISH: SEE NOTE 2	SIZE: C DWG. NO. 6850-46
DO NOT SCALE DRAWING		SCALE: FULL	PROJECT NO. EX311 REV J