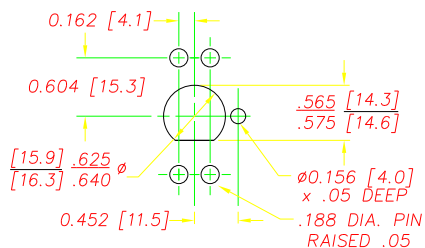
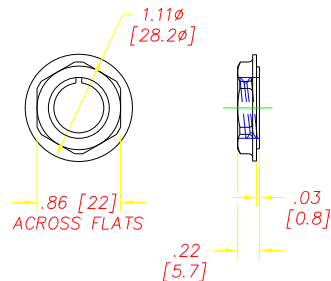


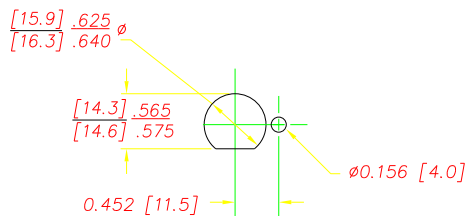
USE 2 REACTION
PINS, TOP OR BOTTOM



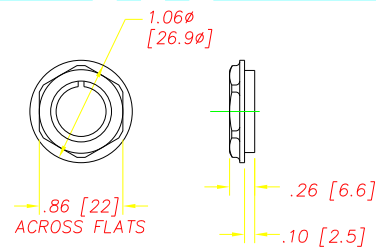
RECOMMENDED PLASTIC PANEL
MOUNTING HOLE
(VIEW FROM BACK OF PANEL)



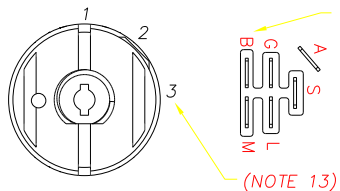
NUT DETAILS
(DSI P/N 9256)
PANEL THICKNESS RANGE .07 TO .19



RECOMMENDED METAL PANEL
MOUNTING HOLE
(VIEW FROM BACK OF PANEL)



NUT DETAILS
(DSI# 9252)
MATES WITH ACCURATE MOLD &
DIE CO. BEZEL# 121
PANEL THICKNESS RANGE .05 TO .17



(NOTE 11) ⚠

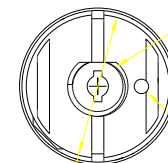
POSITION	ROTATION	FUNCTION	CONTACT
1	0°	OFF	M+G
2	45°	ON	B+L+A
3	85°	START	B+L+S

NOTES

- DIM.'S IN BRACKET [] ARE IN MILLIMETERS; MILLIMETER TOLERANCES ARE .XX± .5, .XX± .15.
- PLASTIC PARTS ARE DELTON™ (BLACK). TERMINALS ARE BRONZE.
- 7/8 HEX NUT IS SHIPPED SEPARATELY.
- RECOMMENDED ASSEMBLY TORQUE IS 26 IN-LBS TO 36 IN-LBS.
AUTOMATIC SHUTOFF TORQUE SCREWDRIVER MAXIMUM SPEED IS 300 RPM.
- KEY IS SHIPPED SEPARATELY. MAXIMUM TORQUE FOR KEY IS 20 IN LBS.
USE DELTA KEY ONLY. DELTA STEEL KEY PART# 688S-STD.
- SWITCH STYLE STAMPED ON HOUSING.
- DATE CODE INDICATING YEAR, MONTH, AND DAY OF MONTH MANUFACTURED STAMPED ON HOUSING.
- SWITCH ELECTRICAL FUNCTIONALITY TESTED AFTER ASSEMBLY.
- ELECTRICAL RATING, CONTINUOUS: 20A @ 12-14 VDC.
ELECTRICAL LIFE: 5K CYCLES @ 10 AMPS INDUCTIVE.
10K CYCLES @ 5 AMPS INDUCTIVE.
50K CYCLES @ 5 AMPS RESISTIVE.
- THIS PRODUCT COVERED BY THE FOLLOWING U.S. PATENT: 5,252,791.
OTHER PATENTS APPLIED FOR.
- SWITCH SHOULD NEVER BE MOUNTED IN PANEL WITH THE "B" TERMINAL DIRECTLY ABOVE THE "G" TERMINAL, RELATIVE TO GRAVITY.
- PULL FORCE TO DISLOCATE BACK COVER IS 80 LBS. MINIMUM.
- POSITION 3 IS MOMENTARY
- ALL OTHER CONTACT COMBINATIONS ARE NOT ALLOWED.

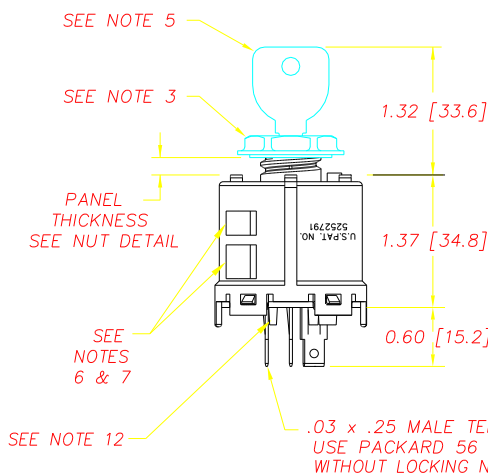


REVISIONS			
B	REVISED BACK COVER, CR 1018	08/15/97	TW
C	REVISED BACK COVER, CR 1046	9/17/97	JH
D	ADDED CONNECTOR STOP, CR1215	12/11/98	JH
E	REM'D CORE IN BACKCOVER, CR 1306	06/04/99	JH
F	UPDATED NOTE, MATERIAL IS BRONZE	7/13/99	ML
G	ADDED TAPER PER CR1334	9/9/99	JH
H	DEFINED CRITICAL CHARACTERISTICS	05/08/00	JH
J	DIM .62 [15.7] TO .60 [15.2], CN0554	09/09/02	JG
K	REMOVE CRITICAL DIM., CR 1477	06/02/03	JH



SEAL BETWEEN
ROTATING SHAFT AND
SWITCH HOUSING

Ø.150 [3.81] x .045 HIGH
PIN MAY BE PART OF SWITCH
HOUSING (AS SHOWN) OR MAY BE
ON SEPARATE WASHER, DELTA P/N 9260



SEE NOTE 5

SEE NOTE 3

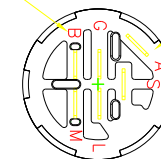
PANEL
THICKNESS
SEE NUT DETAIL

SEE
NOTES
6 & 7


SEE NOTE 12

.03 x .25 MALE TERMINALS (6)
USE PACKARD 56 SERIES TERMINALS
WITHOUT LOCKING NIBS, OR EQUIVALENT

(NOTE 11) ⚠



TERMINAL PATTERN TO MATE
WITH PACKARD 5-WAY CONNECTOR
P/N 2973422, OR EQUIVALENT

DELTA SYSTEMS, INC. DOES NOT ASSUME ANY LIABILITY ARISING OUT OF THE MISAPPLICATION OF ANY PRODUCT		DRAWN MR DATE 11/18/96	CHECKED TW DATE 11/22/96	 DELTA SYSTEMS INC. STREETSBORO, OHIO 44241
COMPUTER GENERATED DRAWING - NO MANUAL CHANGES ALLOWED		MATERIAL SEE NOTE 2		TITLE IGNITION SWITCH 3 - POSITION
UNLESS OTHERWISE SPECIFIED DIMENSIONS ARE IN INCHES TOLERANCES ARE: .XX± .02 .XXX± .005 ANG± 1°		FINISH SEE NOTE 2		SIZE C DWG. NO. 6850-36
DO NOT SCALE DRAWING		SCALE FULL		PROJECT NO. EX311 REV K