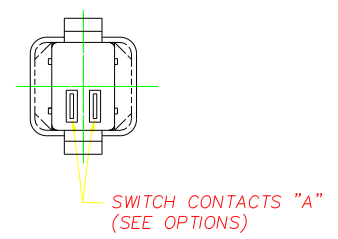
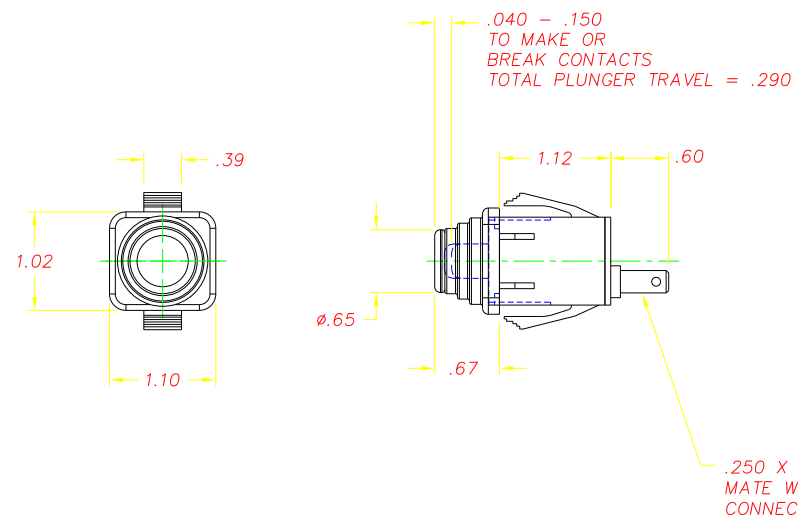
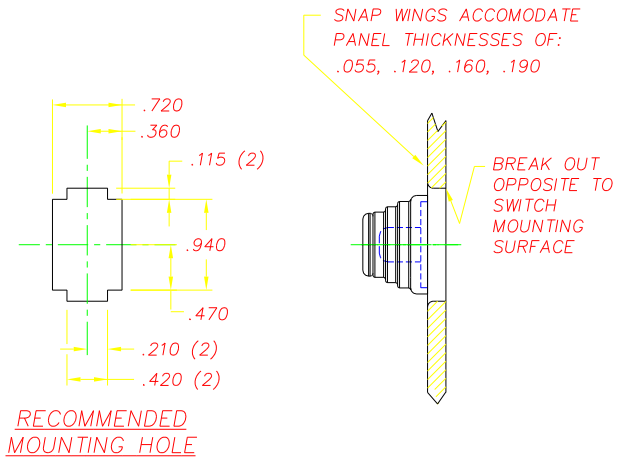
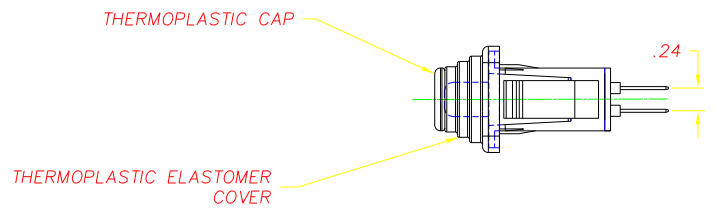


REVISIONS			
~	INITIAL RELEASE, CR 1455	02/25/02	JH



OPTIONS & COLOR


DSI P/N	SWITCH "A"	COLOR
6710-30	N.O.	GRAY HOUSING & PLUNGER. BACK COVER, PROTECTIVE COVER & CAP ARE BLACK
6710-31	N.C.	GRAY HOUSING, PLUNGER & BACK COVER. PROTECTIVE COVER AND CAP ARE BLACK



NOTES:

- 1-PLASTIC PARTS-DELTON™, UV STABLE, FUEL RESISTANT THERMOPLASTIC. TERMINALS-NICKEL PLATED BRASS.
- 2-DATE CODE INDICATING YEAR, MONTH, AND DAY OF MONTH MANUFACTURED STAMPED ON HOUSING.
- 3-INTEGRITY OF WELD AND SWITCH FUNCTIONALITY TESTED AFTER ASSEMBLY.
- 4-THIS PRODUCT COVERED BY THE FOLLOWING U.S. PATENT: 4,812,604. OTHER PATENTS APPLIED FOR.

DELTA SYSTEMS, INC. DOES NOT ASSUME ANY LIABILITY ARISING OUT OF THE MISAPPLICATION OF ANY PRODUCT

COMPUTER GENERATED DRAWING - NO MANUAL CHANGES ALLOWED	UNLESS OTHERWISE SPECIFIED DIMENSIONS ARE IN INCHES TOLERANCES ARE: .XX# .02 .XXX# .005 ANG# 1° DO NOT SCALE DRAWING	DRAWN LMM	DATE 01/18/02	 <b>DELTA</b> SYSTEMS INC. STREETSBORO, OHIO 44241	TITLE SNAP MOUNT PLUNGER SWITCH WITH PROTECTIVE COVER AND CAP
		CHECKED JH	DATE 02/25/02		SIZE C
		MATERIAL SEE NOTE 1	FINISH SEE OPTION TABLE	SCALE FULL	PROJECT NO. EX311
				REV ~	