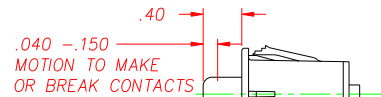
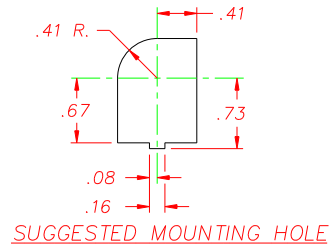
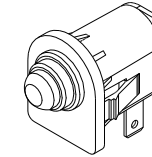


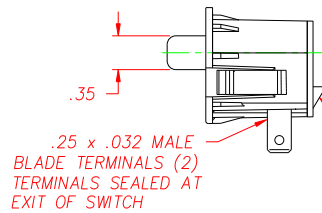
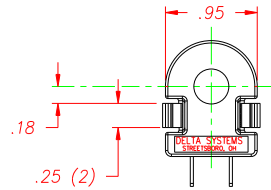
REVISIONS			
~	INITIAL RELEASE, CR 1675	02/06/08	MA



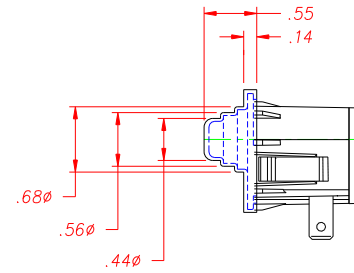
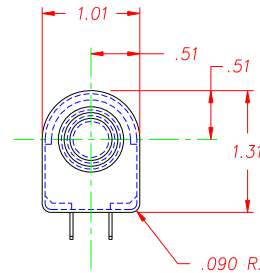
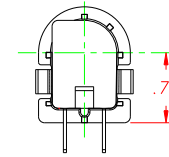
WITH COVER ON SWITCH, SNAP WINGS TO ACCOMMODATE PANEL THICKNESSES OF .060 AND .085, INCLUDING PAINT AND DECALS.



ISOMETRIC VIEW



TERMINAL PATTERN & LOCKING TAB TO MATE WITH EITHER DSI 96525 SERIES OR 96526 SERIES CONNECTORS

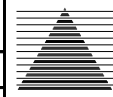


DIM.'S SHOWN HERE ARE WITH COVER INSTALLED ON SWITCH

NOTES:

- 1-PLASTIC PARTS - UV STABLE, FIRE RETARDANT THERMOPLASTIC.
TERMINALS - NICKEL PLATED BRASS.
CONTACT - BERYLLIUM COPPER.
BOOT - THERMOPLASTIC ELASTOMER.
- 2-DATE CODE INDICATING YEAR, MONTH, AND DAY OF MONTH MANUFACTURED STAMPED ON HOUSING.
- 3-INTEGRITY OF WELD AND SWITCH FUNCTIONALITY TESTED AFTER ASSEMBLY.
- 4-THIS PRODUCT COVERED BY THE FOLLOWING U.S. PATENT; 4,812,604.
- 5-ELECTRICAL RATING: 5A @ 12-14VDC.
- 6-LIFE AT RATED LOAD: 10K CYCLES INDUCTIVE, 75K CYCLES RESISTIVE.
- 7-MECHANICAL LIFE: 300,000 CYCLES.
- 8-OPERATING TEMPERATURE: -20°F TO 150°F.
- 9-CONNECTION EFFORT: UP TO 10 LBS. PER TERMINAL
- 10-OPERATING FORCE: 7.25 +/- 1.25 LBS.
- 11-THIS SWITCH IS RECOGNIZED UNDER CATEGORY UL583. (INDUSTRIAL TRUCK ACCESSORIES, BATTERY POWERED-COMPONENT, FILE# YCF2.AU3028)

DELTA SYSTEMS, INC. DOES NOT ASSUME ANY LIABILITY ARISING OUT OF THE MISAPPLICATION OF ANY PRODUCT		DRAWN MA	DATE 12/14/06
COMPUTER GENERATED DRAWING - NO MANUAL CHANGES ALLOWED		CHECKED JM	DATE 1/31/07
UNLESS OTHERWISE SPECIFIED DIMENSIONS ARE IN INCHES TOLERANCES ARE: .XXX± .02 .XXX± .005 ANG±		MATERIAL SEE NOTE 1	
DO NOT SCALE DRAWING		FINISH WHITE SWITCH BLACK BOOT	

 DELTA SYSTEMS INC. STREETSBORO, OHIO 44241		TITLE N.O. SNAP MOUNT SWITCH WITH BeCu CONTACT	
SIZE C	DWG. NO. 6440-76FR	SCALE FULL	REV ~
PROJECT NO.		REV	

