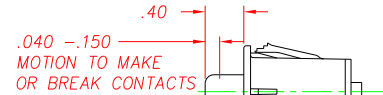
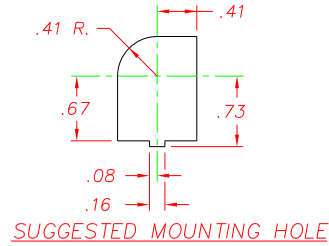
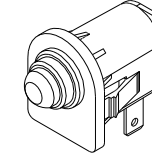


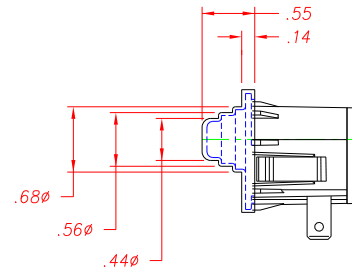
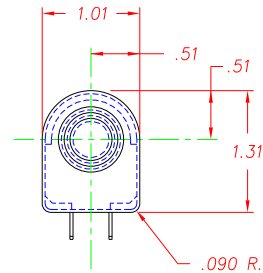
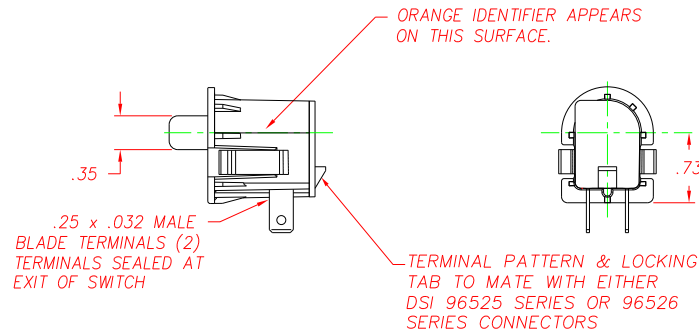
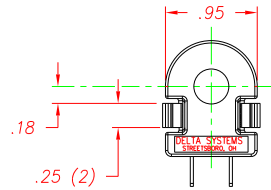
REVISIONS			
~	INITIAL RELEASE, CR 926	03/06/97	TW
A	REVISED SNAP WING NOTE, CR 1003	07/17/97	JH
B	ADDED SPEC NOTES, CR1273	02/22/99	JH
C	CHANGED DIM. PER CR1342	9/15/99	JH
D	ADDED WING MOD., CR1427	11/09/02	MA
E	REVISED TAB & CONCTR P/N, CR1627	02/24/06	MA



WITH COVER ON SWITCH, SNAP WINGS TO ACCOMMODATE PANEL THICKNESSES OF .060 AND .085, INCLUDING PAINT AND DECALS.



ISOMETRIC VIEW

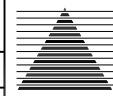


DIM.'S SHOWN HERE ARE WITH COVER INSTALLED ON SWITCH

NOTES:

- 1-PLASTIC PARTS - DELTON™, UV STABLE, FUEL RESISTANT THERMOPLASTIC.
TERMINALS - NICKEL PLATED BRASS.
CONTACT - BERYLLIUM COPPER.
BOOT - THERMOPLASTIC ELASTOMER.
- 2-DATE CODE INDICATING YEAR, MONTH, AND DAY OF MONTH MANUFACTURED STAMPED ON HOUSING.
- 3-INTEGRITY OF WELD AND SWITCH FUNCTIONALITY TESTED AFTER ASSEMBLY.
- 4-THIS PRODUCT COVERED BY THE FOLLOWING U.S. PATENT; 4,812,604.
FOLLOWING U.S. PATENT; 4,812,604. OTHER PATENTS APPLIED FOR.
- 5-ELECTRICAL RATING: 5A @ 12-14VDC.
- 6-LIFE AT RATED LOAD: 10K CYCLES INDUCTIVE, 75K CYCLES RESISTIVE.
- 7-MECHANICAL LIFE: 300,000 CYCLES.
- 8-OPERATING TEMPERATURE: -20°F TO 150°F.
- 9-CONNECTION EFFORT: UP TO 10 LBS. PER TERMINAL
- 10-OPERATING FORCE: 3 LBS.

DELTA SYSTEMS, INC. DOES NOT ASSUME ANY LIABILITY ARISING OUT OF THE MISAPPLICATION OF ANY PRODUCT		DRAWN LMM	DATE 03/05/97
		CHECKED TW	DATE 03/06/97
		MATERIAL SEE NOTE 1	
COMPUTER GENERATED DRAWING - NO MANUAL CHANGES ALLOWED		FINISH BLACK	
UNLESS OTHERWISE SPECIFIED DIMENSIONS ARE IN INCHES TOLERANCES ARE: .XX± .02 .XXX± .005 ANG±		DO NOT SCALE DRAWING	

 DELTA SYSTEMS INC. STREETSBORO, OHIO 44241	
TITLE N.O. SNAP MOUNT SWITCH WITH BeCu CONTACT	
SIZE C	DWG. NO. 6440-62
SCALE FULL	PROJECT NO. E-311
	REV E