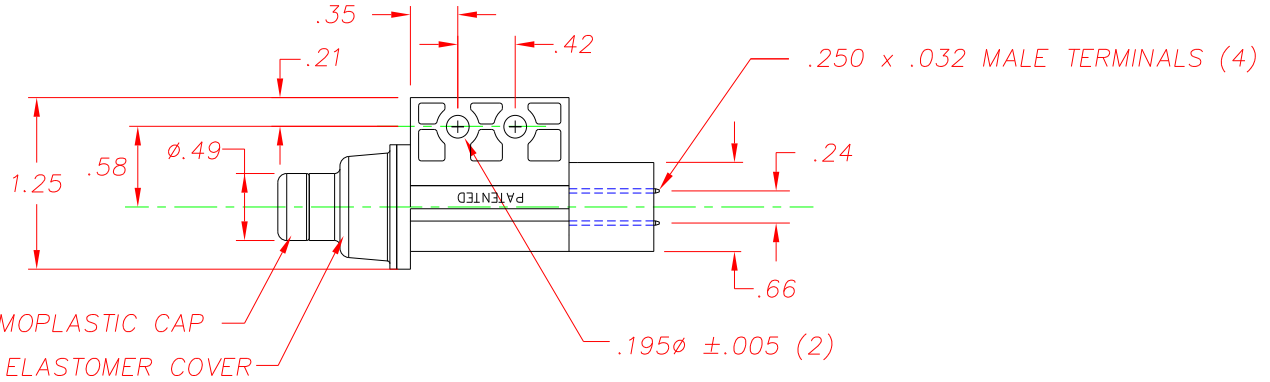
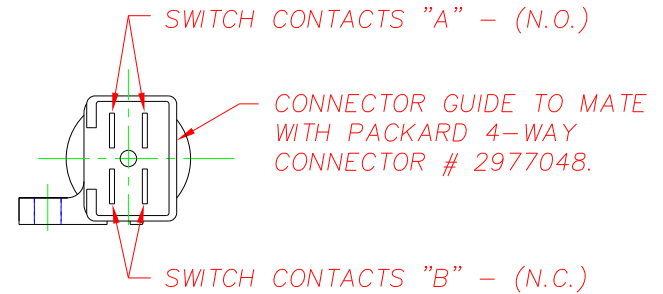


REVISIONS			
~	INITIAL RELEASE, CR 1206	09/22/98	JH
A	ADD PLUNGER TRAVEL NOTE, CR1225	11/19/98	JH
B	ADD THERMAL BOND NOTE, CR 1268	10/28/99	JH
C	ADDED BREAK/MAKE NOTE, CR 1293	11/16/99	JH
D	ADDED NOTES 10 AND 11, CR 1671	05/01/07	MA



**NOTES:**

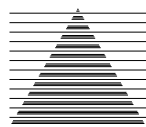
- 1-"NC" STAMPED ON ALL NORMALLY CLOSED TERMINALS.
- 2-TERMINALS ARE NICKEL PLATED
- 3-PLASTIC PARTS ARE DELTON™, UV STABLE, FUEL RESISTANT THERMOPLASTIC. PROTECTIVE COVER IS THERMOPLASTIC ELASTOMER.
- 4-DATE CODE INDICATING YEAR, MONTH, & DAY OF MONTH MANUFACTURED STAMPED ON HOUSING.
- 5-INTEGRITY OF WELD & SWITCH FUNCTIONALITY TESTED AFTER ASSEMBLY.
- 6-THIS PRODUCT COVERED BY THE FOLLOWING U.S. PATENT; 4,812,604. OTHER PATENTS APPLIED FOR.
- 7-TOTAL TRAVEL OF PLUNGER IS .47 FROM REST POSITION.
- 8-THERMALLY BONDED PLUNGER ASSEMBLY IS COMPLETELY SEALED. TERMINALS ARE UNSEALED. INSTALLED SWITCH TO HAVE PLUNGER POINTING UP VERTICALLY OR ABOVE HORIZONTAL PLANE.
- 9-"NC" POLE BREAKS CONTACT BEFORE THE "NO" POLE MAKES CONTACT.
- 10-MAX. OPERATING FORCE: 5.0 LBS. AT .400 TRAVEL.
- 11-ASSEMBLY IS RoHS COMPLIANT.

DELTA SYSTEMS, INC. DOES NOT ASSUME ANY LIABILITY ARISING OUT OF THE MISAPPLICATION OF ANY PRODUCT

COMPUTER GENERATED DRAWING - NO MANUAL CHANGES ALLOWED

UNLESS OTHERWISE SPECIFIED DIMENSIONS ARE IN INCHES TOLERANCES ARE:  
 .XX± .02 .XXX± .010 ANG±  
 DO NOT SCALE DRAWING

DRAWN	DATE
LMM	09/22/98
CHECKED	DATE
JH	09/22/98
MATERIAL	
AS NOTED	
FINISH	
GRAY SWITCH BLACK CAP/COVER	



**DELTA**  
SYSTEMS INC.  
STREETSBORO, OHIO 44241

TITLE		N.O./N.C. PLUNGER SWITCH WITH SPLASHPROOF PLUNGER	
SIZE	DWG. NO.	6410-53	
SCALE	PROJECT NO.	REV	
FULL	EX358	D	