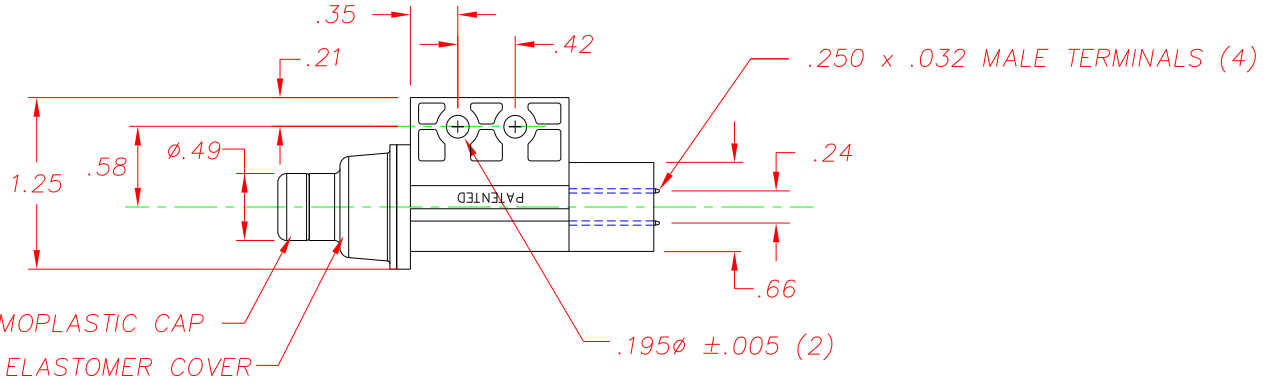
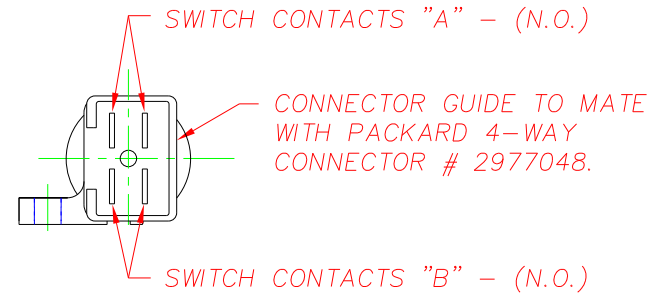


REVISIONS			
B	ADDED SPEC NOTES, CR 1273	02/22/99	JH
C	ADD THERMAL BOND NOTE, CR 1268	10/28/99	JH
D	NOTE 12 WAS 4.5 LBS. OP. FORCE	05/01/07	MA
"	ADDED NOTE 14, CR 1671	"	"



THERMOPLASTIC CAP  
THERMOPLASTIC ELASTOMER COVER

**NOTES:**

- 1-TERMINALS ARE NICKEL PLATED
- 2-PLASTIC PARTS ARE DELTON™, UV STABLE, FUEL RESISTANT THERMOPLASTIC. PROTECTIVE COVER IS THERMOPLASTIC ELASTOMER.
- 3-DATE CODE INDICATING YEAR, MONTH, & DAY OF MONTH MANUFACTURED STAMPED ON HOUSING.
- 4-INTEGRITY OF WELD & SWITCH FUNCTIONALITY TESTED AFTER ASSEMBLY. △
- 5-THIS PRODUCT COVERED BY THE FOLLOWING U.S. PATENT; 4,812,604. OTHER PATENTS APPLIED FOR.
- 6-TOTAL TRAVEL OF PLUNGER IS .47 FROM REST POSITION.
- 7-ELECTRICAL RATING: 5A @ 12-14VDC.
- 8-LIFE AT RATED LOAD: 10K CYCLES INDUCTIVE, 75K CYCLES RESISTIVE.
- 9-MECHANICAL LIFE: 300,000 CYCLES.
- 10-OPERATING TEMPERATURE: -20°F TO 150°F.
- 11-CONNECTION EFFORT: UP TO 10 LBS. PER TERMINAL
- 12-MAX. OPERATING FORCE: 5.0 LBS. AT .400 TRAVEL.
- 13-THERMALLY BONDED PLUNGER ASSEMBLY IS COMPLETELY SEALED. TERMINALS ARE UNSEALED. INSTALLED SWITCH TO HAVE PLUNGER POINTING UP VERTICALLY OR ABOVE HORIZONTAL PLANE.
- 14-ASSEMBLY IS RoHS COMPLIANT.

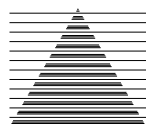
DELTA SYSTEMS, INC. DOES NOT ASSUME ANY LIABILITY ARISING OUT OF THE MISAPPLICATION OF ANY PRODUCT

COMPUTER GENERATED DRAWING - NO MANUAL CHANGES ALLOWED

UNLESS OTHERWISE SPECIFIED DIMENSIONS ARE IN INCHES TOLERANCES ARE:  
.xx± .02 .xxx± .010 ANG±

DO NOT SCALE DRAWING

DRAWN	DATE
LMM	09/22/98
CHECKED	DATE
JH	09/22/98
MATERIAL	
AS NOTED	
FINISH	
GRAY SWITCH HOUSING BLACK TERMINAL COVER BLACK CAP/COVER	

 <b>DELTA</b> SYSTEMS INC. STREETSBORO, OHIO 44241		TITLE	
		N.O./N.O. PLUNGER SWITCH WITH SPLASHPROOF PLUNGER	
SIZE	DWG. NO.	REV	
B	6410-02	D	
SCALE		PROJECT NO.	REV
FULL		EX358	D