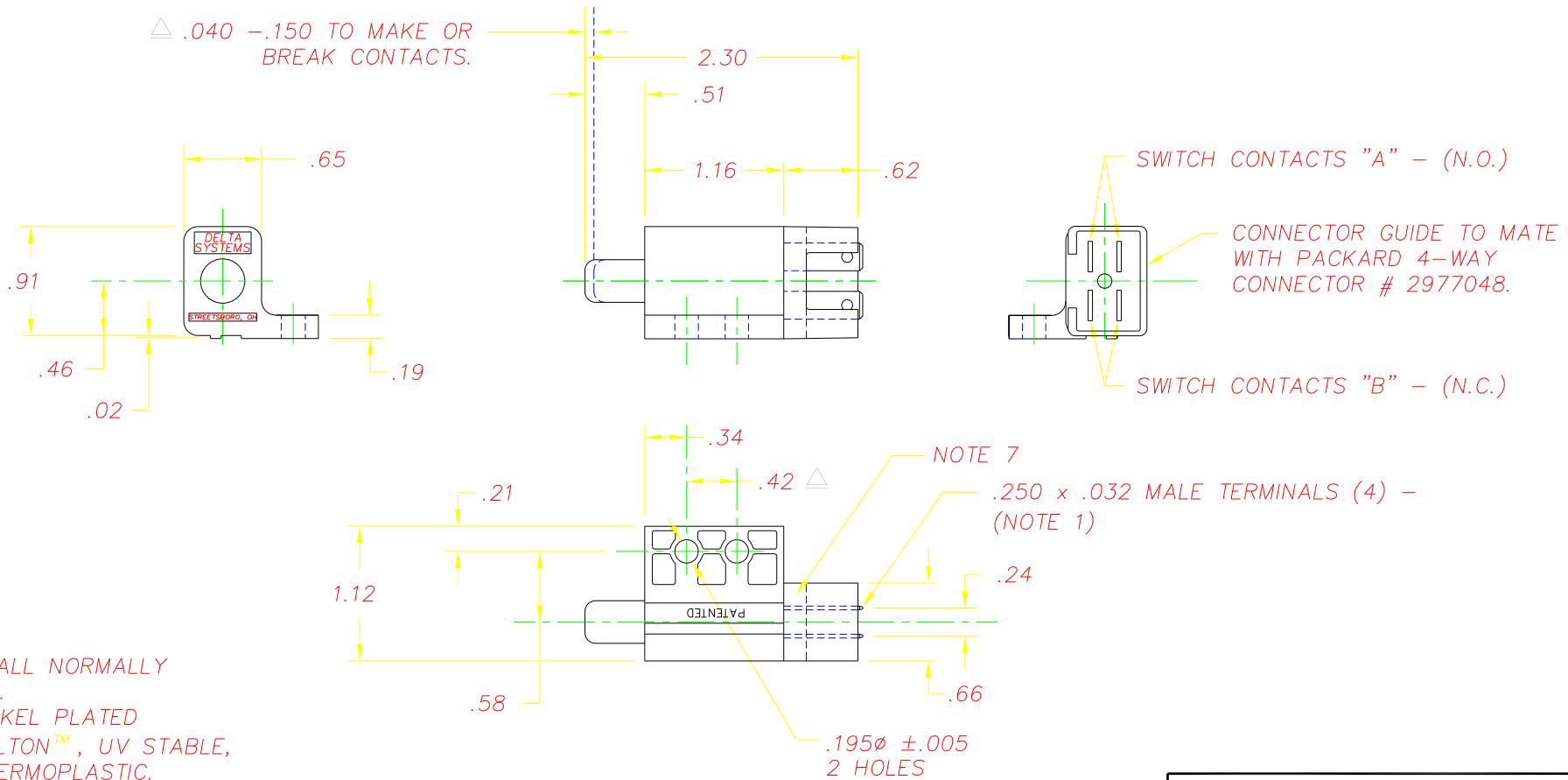


REVISIONS			
~	INITIAL RELEASE, CR 1268	10/28/99	JH
A	ADDED BREAK/MAKE NOTE, CR 1293	11/16/99	JH

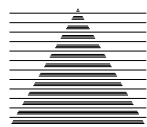


NOTES:

- 1-"NC" STAMPED ON ALL NORMALLY CLOSED TERMINALS.
- 2-TERMINALS ARE NICKEL PLATED
- 3-PLASTIC PARTS-DELTON™, UV STABLE, FUEL RESISTANT THERMOPLASTIC.
- 4-DATE CODE INDICATING YEAR, MONTH, & DAY OF MONTH MANUFACTURED STAMPED ON HOUSING.
- 5-INTEGRITY OF WELD & SWITCH FUNCTIONALITY TESTED AFTER ASSEMBLY. △
- 6-THIS PRODUCT COVERED BY THE FOLLOWING U.S. PATENT; 4,812,604. OTHER PATENTS APPLIED FOR.
- 7-TERMINALS ARE SEALED WITH ENCAPSULANT. PLUNGER IS UNSEALED. INSTALLED SWITCH TO HAVE TERMINALS POINTING UP VERTICALLY OR ABOVE HORIZONTAL PLANE.
- 8-"NC" POLE BREAKS CONTACT BEFORE THE "NO" POLE MAKES CONTACT.

DELTA SYSTEMS, INC. DOES NOT ASSUME ANY LIABILITY ARISING OUT OF THE MISAPPLICATION OF ANY PRODUCT	
COMPUTER GENERATED DRAWING - NO MANUAL CHANGES ALLOWED	UNLESS OTHERWISE SPECIFIED DIMENSIONS ARE IN INCHES TOLERANCES ARE: .xx± .02 .xxx± .010 ANG± DO NOT SCALE DRAWING

DRAWN	DATE
LMM	10/25/99
CHECKED	DATE
JH	10/28/99
MATERIAL	
AS NOTED	
FINISH	
GRAY	

		DELTA SYSTEMS INC. STREETSBORO, OHIO 44241	
TITLE			
N.O./N.C. PLUNGER SWITCH WITH SPLASHPROOF TERMINALS			
SIZE	DWG. NO.		
B	6405-53		
SCALE	PROJECT NO.	REV	
FULL	EX363	A	