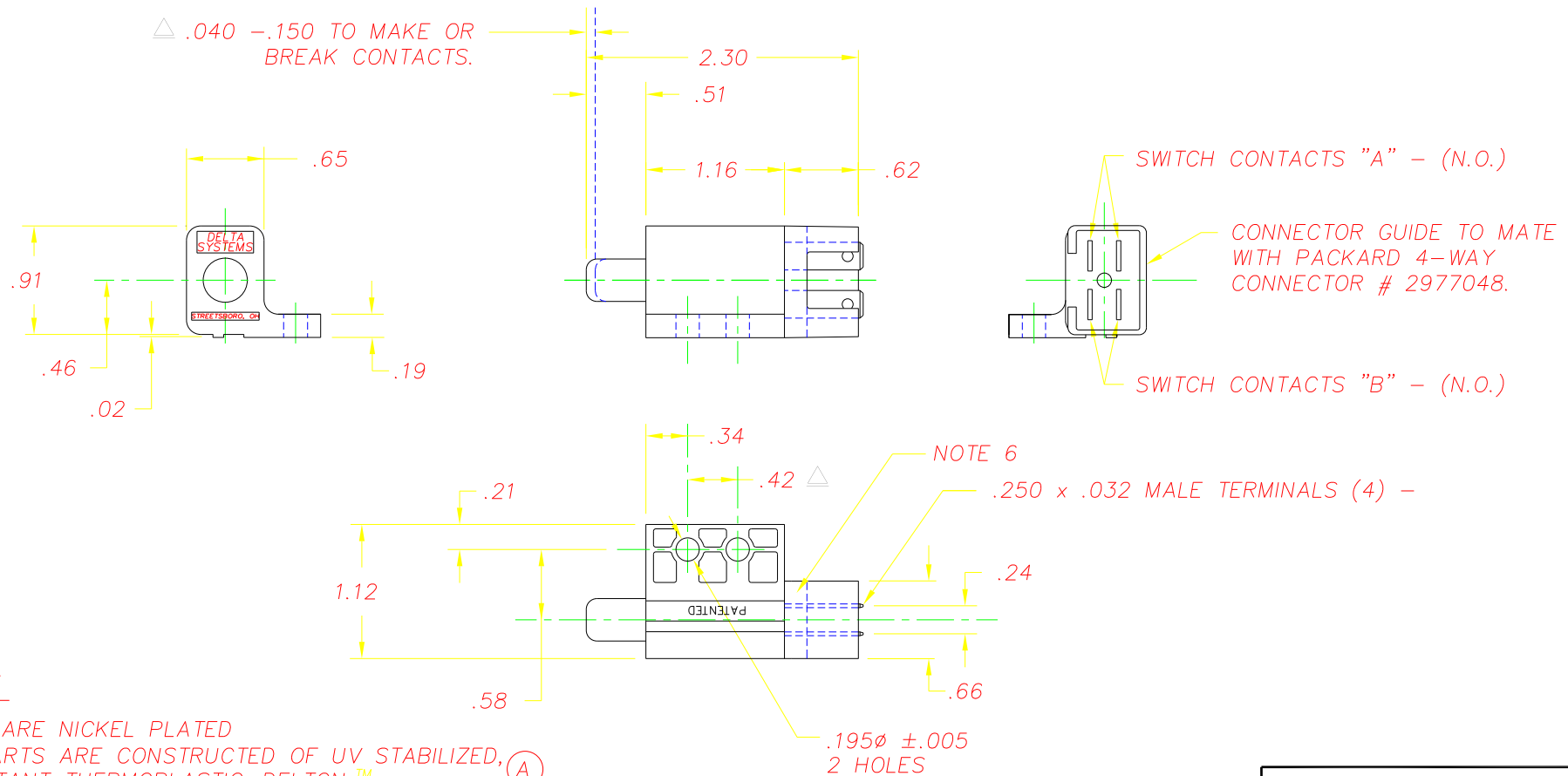


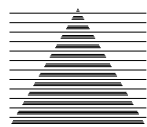
REVISIONS			
~	INITIAL RELEASE, CR 1268	10/28/99	JH
A	BUTTON MAT'L WAS ACETAL, CR1517	07/01/03	MA
B	ADD FINISH NOTE, CN 0976	04/01/05	JH



**NOTES:**

- 1-TERMINALS ARE NICKEL PLATED
- 2-PLASTIC PARTS ARE CONSTRUCTED OF UV STABILIZED, FUEL RESISTANT THERMOPLASTIC-DELTON™
- 3-DATE CODE INDICATING YEAR, MONTH, & DAY OF MONTH MANUFACTURED STAMPED ON HOUSING.
- 4-INTEGRITY OF WELD & SWITCH FUNCTIONALITY TESTED AFTER ASSEMBLY.
- 5-THIS PRODUCT COVERED BY THE FOLLOWING U.S. PATENT; 4,812,604. OTHER PATENTS APPLIED FOR.
- 6-TERMINALS ARE SEALED WITH ENCAPSULANT. PLUNGER IS UNSEALED. INSTALLED SWITCH TO HAVE TERMINALS POINTING UP VERTICALLY OR ABOVE HORIZONTAL PLANE.

DELTA SYSTEMS, INC. DOES NOT ASSUME ANY LIABILITY ARISING OUT OF THE MISAPPLICATION OF ANY PRODUCT		DRAWN	DATE
		LMM	10/25/99
COMPUTER GENERATED DRAWING - NO MANUAL CHANGES ALLOWED		CHECKED	DATE
		JH	10/28/99
UNLESS OTHERWISE SPECIFIED DIMENSIONS ARE IN INCHES TOLERANCES ARE: .XX± .02 .XXX± .010 ANG±		MATERIAL	
		AS NOTED	
DO NOT SCALE DRAWING		FINISH	
		HOUSING GRAY PLUNGER/COVER BLACK	

 <b>DELTA</b> SYSTEMS INC. STREETSBORO, OHIO 44241		TITLE	
		N.O./N.O. PLUNGER SWITCH WITH SPLASHPROOF TERMINALS	
SIZE	DWG. NO.	PROJECT NO.	
B	6405-02	REV	
SCALE	FULL	EX363	B