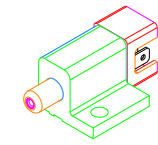
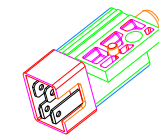
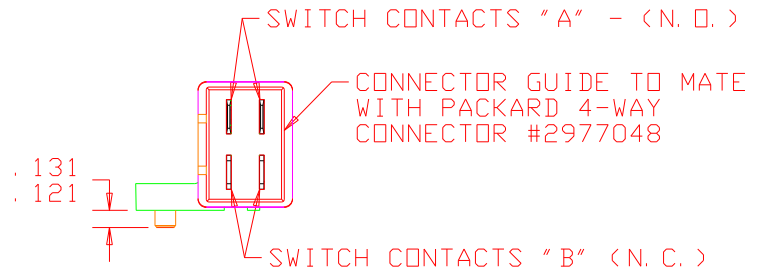
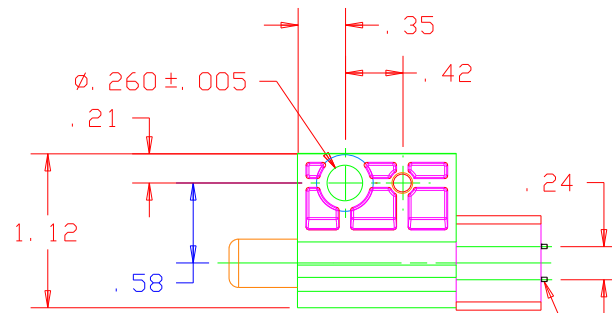
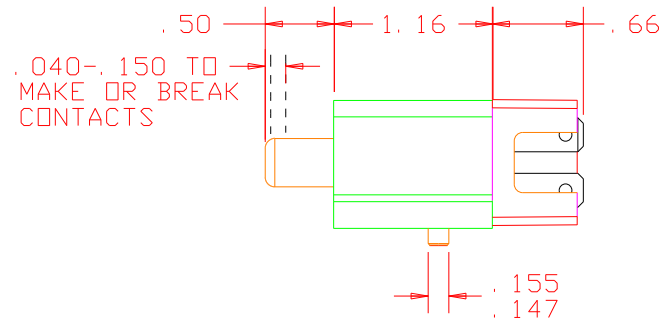
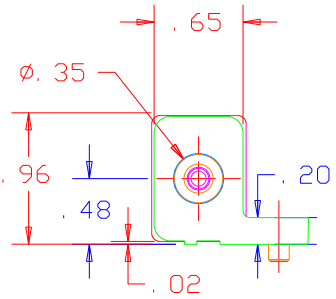


REVISIONS

~	INITIAL RELEASE, CR1669	02/12/07	IDK



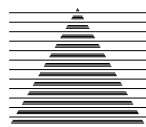
- NOTES:
- 1) "NC" STAMPED ON NORMALLY CLOSED TERMINALS.
  - 2) TERMINALS NICKEL PLATED.
  - 3) PLASTIC PARTS - DELTON (TM), UV STABLE FUEL RESISTANT THERMPLASTIC.
  - 4) DATE CODE INDICATING YEAR, MONTH, & DAY OF MANUFACTURE STAMPED ON HOUSING.
  - 5) INTEGRITY OF WELD & SWITCH FUNCTIONALITY TESTED AFTER ASSEMBLY.
  - 6) THIS PRODUCT COVERED BY U. S. PATENT # 4,812,604.
  - 7) "NC" POLE BREAKS CONTACT BEFORE "NO" POLE MAKES CONTACT.
  - 8) HOUSING IS BLACK, COVER AND PLUNGER ARE GRAY
  - 9) OPERATING FORCE 4.0 ± 1.5 LBS AT .400 DEPRESSION

.250x.032 MALE TERMINALS (4)  
MATE WITH PACKARD 56 SERIES FEMALE

DELTA SYSTEMS, INC. DOES NOT ASSUME ANY LIABILITY ARISING OUT OF THE MISAPPLICATION OF ANY PRODUCT

COMPUTER GENERATED DRAWING - NO MANUAL CHANGES ALLOWED  
UNLESS OTHERWISE SPECIFIED DIMENSIONS ARE IN INCHES TOLERANCES ARE:  
XX± 0.020 .XXX± 0.010 ANG± 1/2'  
DO NOT SCALE DRAWING

DRAWN	DATE
MEL	09/19/06
CHECKED	DATE
IDK	12/13/06
MATERIAL	
SEE NOTE 3	
FINISH	
SEE NOTE 8	

		DELTA SYSTEMS INC. STREETSBOARD, OHIO 44241	
TITLE			
N. O. /N. C. PLUNGER SWITCH POST AND HOLE			
SIZE	B	DWG. NO.	6402-53
SCALE	1:1	PROJECT NO.	EX311
		REV	~