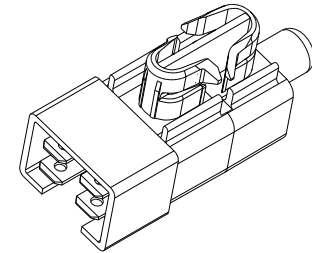


RECOMMENDED MOUNTING SLOT

SWITCH WILL ACCEPT 2mm AND 5mm PANEL THICKNESS INCLUDING PAINT, DECALS, ETC.

*SQUARE EDGE REQUIRED ON WING RETENTION SIDE OF SLOT.

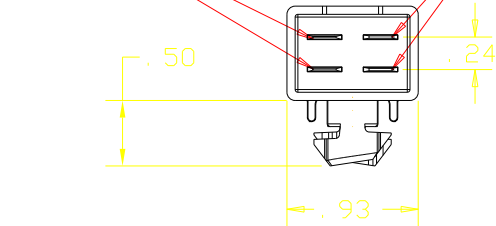
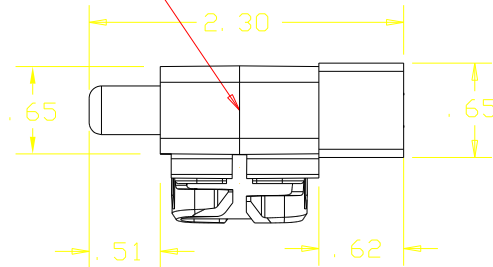
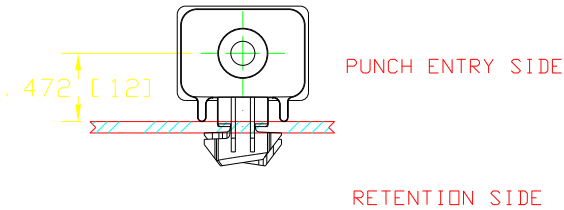
REVISIONS			
~	RELEASED PER CR1486	06/28/02	JH
A	PRINT CORRECTION, CN 0610	01/10/03	JH



DATE CODE STAMPED ON BODY OF SWITCH

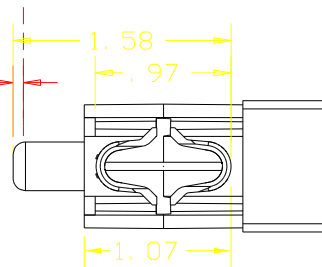
SWITCH CONTACTS "A" - (N. C.)

SWITCH CONTACTS "B" (N. O.)



.040-.150 TO MAKE OR BREAK CONTACTS

.250 X .032 MALE TERMINALS (4) MATE WITH PACKARD 56 SERIES FEMALE. (NOTE 1)



NOTES:

- 1-TERMINALS ARE NICKEL PLATED
- 2-PLASTIC PARTS ARE DELTON UV STABLE FUEL RESISTANT THERMOPLASTIC
- 3-DATE CODE INDICATING YEAR, MONTH AND DAY OF MONTH MANUFACTURED STAMPED ON HOUSING.
- 4-INTEGRITY OF WELD & SWITCH FUNCTIONALITY TESTED AFTER ASSEMBLY.
- 5-THIS PRODUCT IS COVERED BY ONE OR MORE OF THE FOLLOWING U. S. PATENTS: 5, 221, 816; 5, 424, 502 4, 812, 604; OTHER PATENTS APPLIED FOR.

DELTA SYSTEMS, INC. DOES NOT ASSUME ANY LIABILITY ARISING OUT OF THE MISAPPLICATION OF ANY PRODUCT		DRAWN JLM	DATE
		CHECKED JH	DATE 06/28/02
COMPUTER GENERATED DRAWING - NO MANUAL CHANGES ALLOWED		MATERIAL AS NOTED	
		FINISH OLIVE	
UNLESS OTHERWISE SPECIFIED DIMENSIONS ARE IN INCHES TOLERANCES ARE: .xx± .02 .xxx± .005 ANG± 1°		TITLE N. O. /N. C. PLUNGER SWITCH (2mm & 5mm PANEL, DOUBLE POLE)	
DO NOT SCALE DRAWING		SIZE B	DWG. NO. 6401-64
		SCALE 1X	PROJECT NO. EX335
		REV A	

