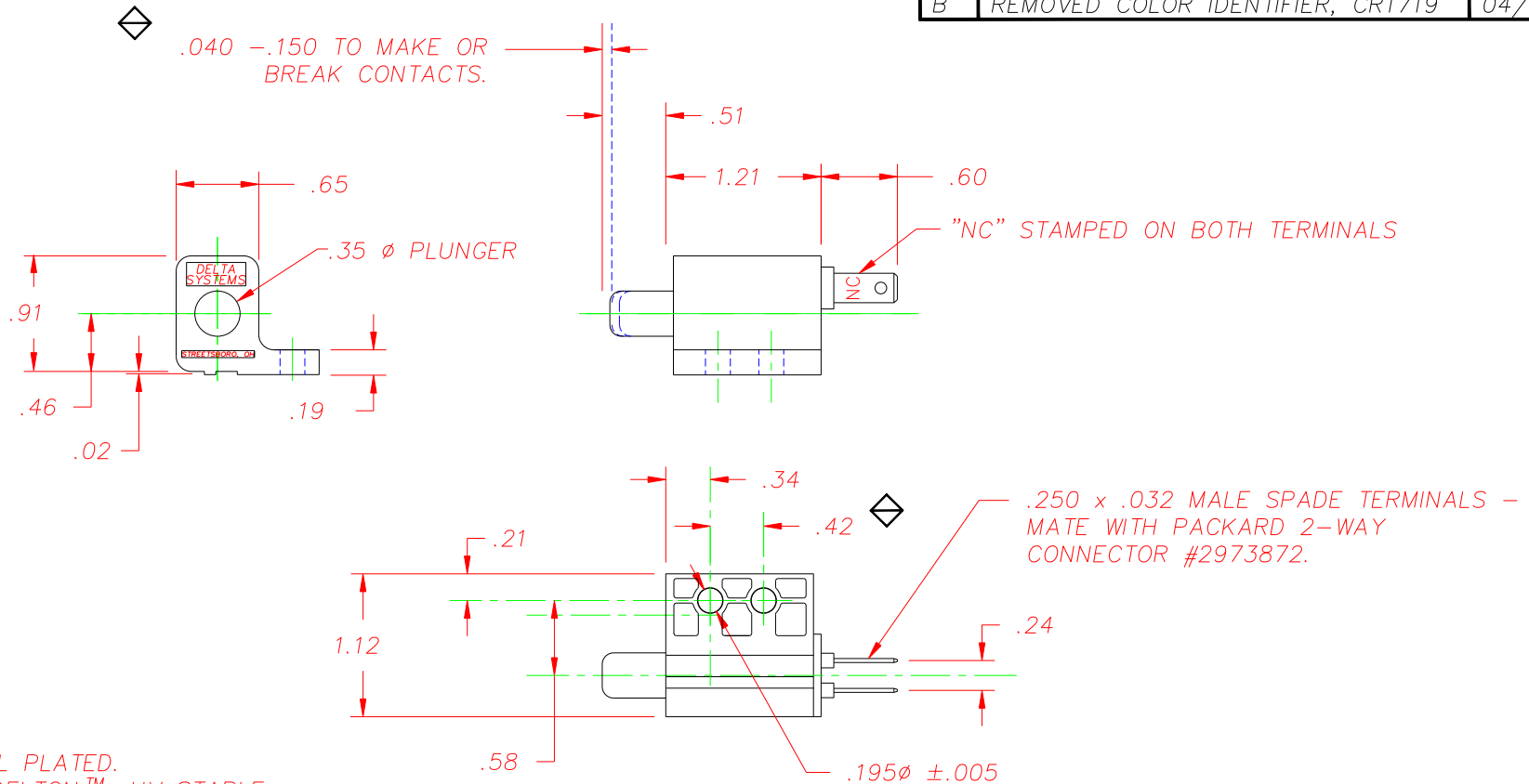


REVISIONS

~	INITIAL RELEASE, CR 918	2/26/97	TW
A	ADDED NAME TO HOUSING, CR 1017	08/19/97	TW
B	REMOVED COLOR IDENTIFIER, CR1719	04/30/08	MA



NOTES:

- 1 - TERMINALS ARE NICKEL PLATED.
- 2 - PLASTIC PARTS ARE DELTON™, UV STABLE, FUEL RESISTANT THERMOPLASTIC.
- 3 - HOUSING AND BACK COVER ARE GRAY, PLUNGER IS OLIVE.
- 4 - DATE CODE INDICATING YEAR, MONTH, AND DAY OF MONTH MANUFACTURED STAMPED ON HOUSING.
- 5 - INTEGRITY OF WELD & SWITCH FUNCTIONALITY \diamond TESTED AFTER ASSEMBLY.
- 6 - THIS PRODUCT COVERED BY THE FOLLOWING U.S. PATENT; 4,812,604. OTHER PATENTS APPLIED FOR.

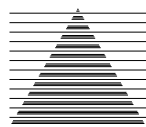
DELTA SYSTEMS, INC. DOES NOT ASSUME ANY LIABILITY ARISING OUT OF THE MISAPPLICATION OF ANY PRODUCT

COMPUTER GENERATED DRAWING - NO MANUAL CHANGES ALLOWED

UNLESS OTHERWISE SPECIFIED DIMENSIONS ARE IN INCHES TOLERANCES ARE:
 .XX \pm .02 .XXX \pm .005 ANG \pm 1°

DO NOT SCALE DRAWING

DRAWN	DATE
LMM	02/25/97
CHECKED	DATE
TW	2/26/97
MATERIAL	
AS NOTED	
FINISH	
AS NOTED	

		DELTA SYSTEMS INC. STREETSBORO, OHIO 44241	
TITLE			
N.C. PLUNGER SWITCH S.P.S.T W/2LB. SPRING			
SIZE	DWG. NO.		
B	6400-87		
SCALE		PROJECT NO.	REV
FULL		EX311	B

