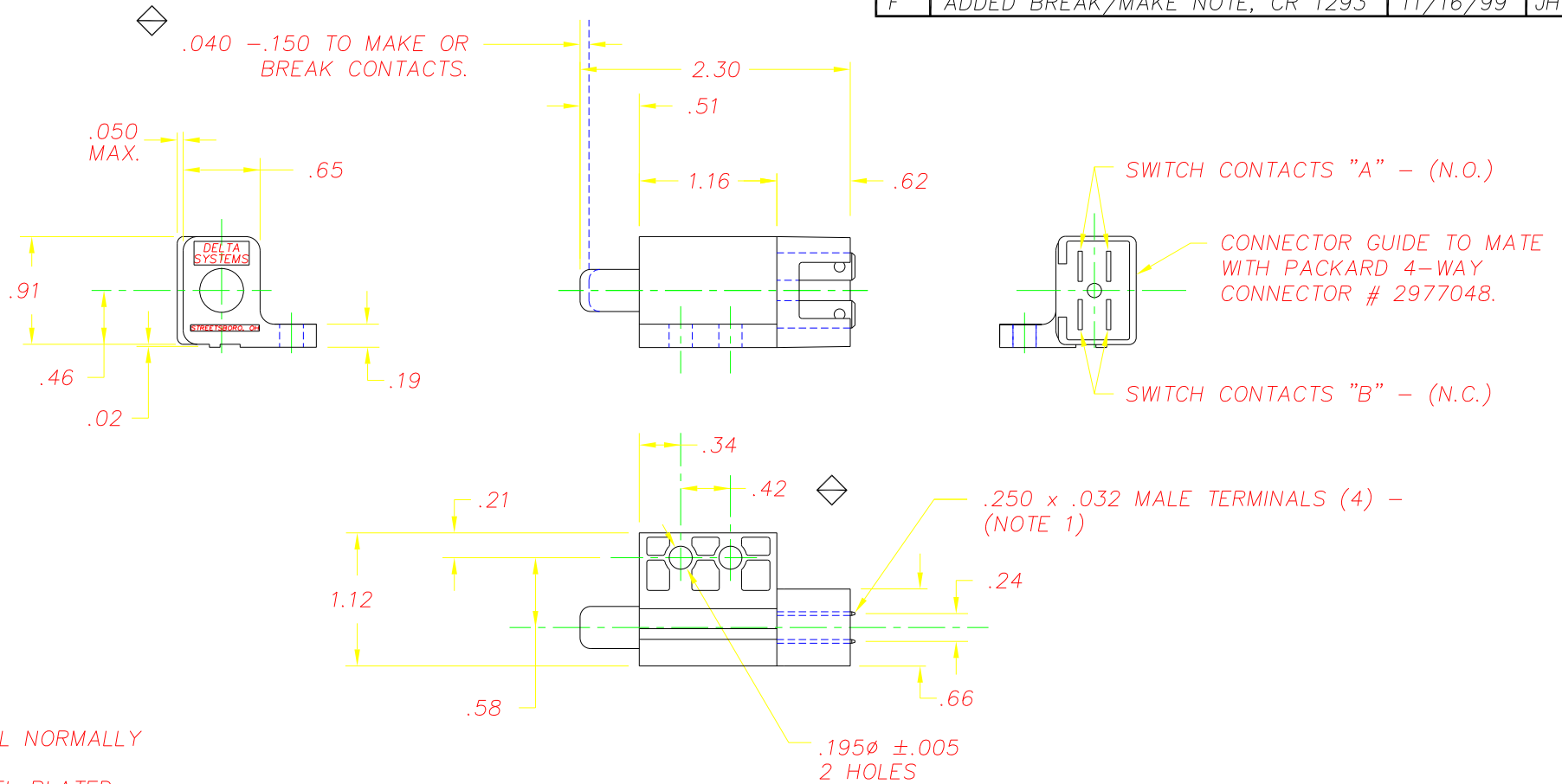
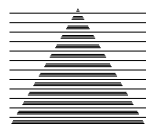


REVISIONS			
D	REV. VIEW OF COVER, CR 1009	7/21/97	TW
E	ADDED NAME TO HOUSING, 1017	08/19/97	TW
F	ADDED BREAK/MAKE NOTE, CR 1293	11/16/99	JH



NOTES:

- 1-"NC" STAMPED ON ALL NORMALLY CLOSED TERMINALS.
- 2-TERMINALS ARE NICKEL PLATED
- 3-PLASTIC PARTS - DELTON™, UV STABLE, FUEL RESISTANT THERMOPLASTIC.
- 4-DATE CODE INDICATING YEAR, MONTH, & DAY OF MONTH MANUFACTURED STAMPED ON HOUSING.
- 5-INTEGRITY OF WELD & SWITCH FUNCTIONALITY TESTED AFTER ASSEMBLY.
- 6-THIS PRODUCT COVERED BY THE FOLLOWING U.S. PATENT; 4,812,604. OTHER PATENTS APPLIED FOR.
- 7-"NC" POLE BREAKS CONTACT BEFORE THE "NO" POLE MAKES CONTACT.

DELTA SYSTEMS, INC. DOES NOT ASSUME ANY LIABILITY ARISING OUT OF THE MISAPPLICATION OF ANY PRODUCT		DRAWN GAS	DATE 06/10/91	 DELTA SYSTEMS INC. STREETSBORO, OHIO 44241
		CHECKED TW	DATE 06/10/91	
COMPUTER GENERATED DRAWING - NO MANUAL CHANGES ALLOWED		MATERIAL AS NOTED		TITLE N.O./N.C. PLUNGER SWITCH (DOUBLE POLE)
		FINISH GRAY		SIZE B
UNLESS OTHERWISE SPECIFIED DIMENSIONS ARE IN INCHES TOLERANCES ARE: .XX \pm .02 .XXX \pm .010 ANG \pm		DO NOT SCALE DRAWING		SCALE FULL
				PROJECT NO. EX311
				REV F