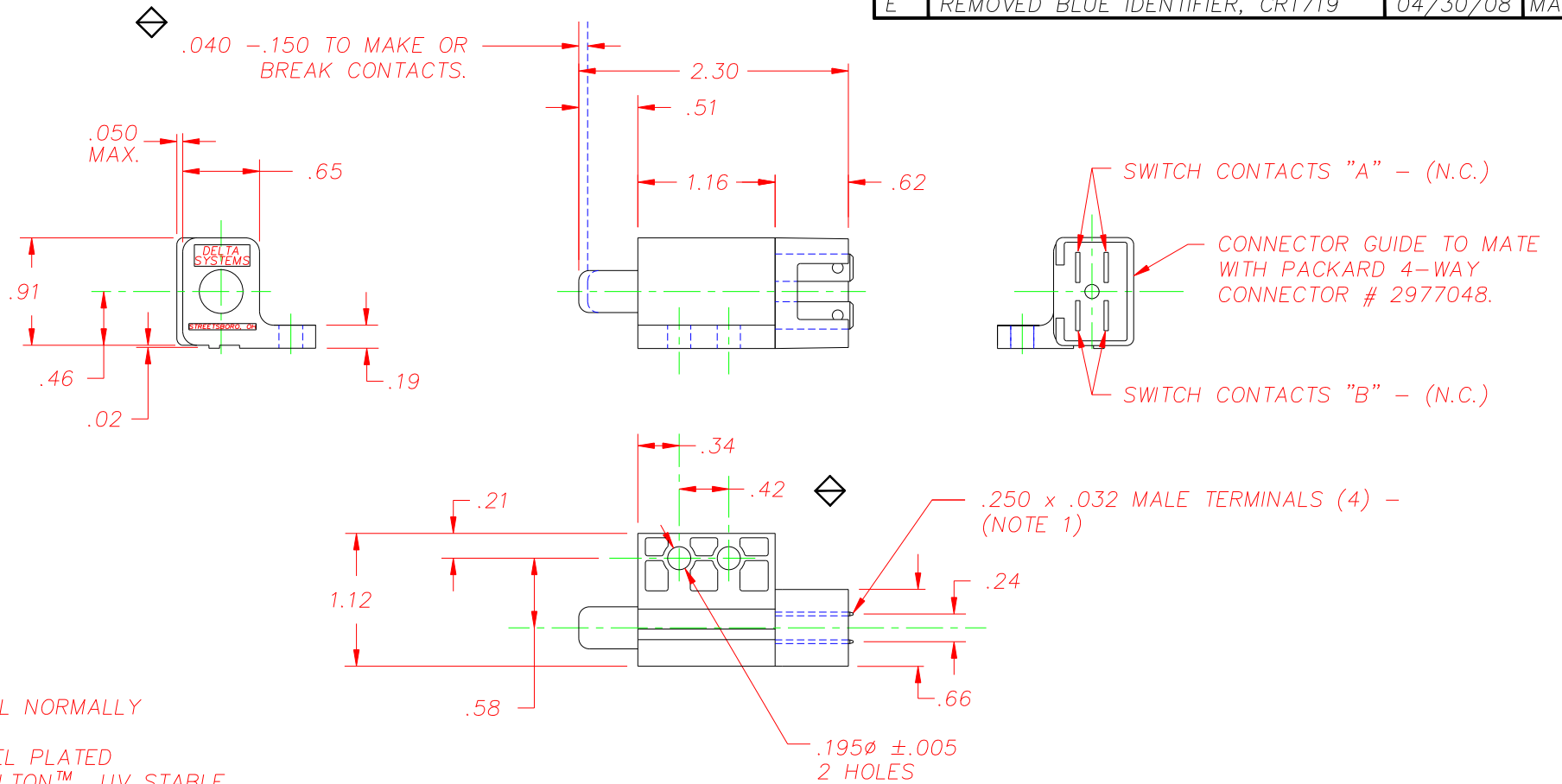


REVISIONS

C	REV. VIEW OF COVER, CR 1009	7/21/97	TW
D	ADDED NAME TO HOUSING, CR1017	08/19/97	TW
E	REMOVED BLUE IDENTIFIER, CR1719	04/30/08	MA



NOTES:

- 1-"NC" STAMPED ON ALL NORMALLY CLOSED TERMINALS.
- 2-TERMINALS ARE NICKEL PLATED
- 3-PLASTIC PARTS - DELTON™, UV STABLE, FUEL RESISTANT THERMOPLASTIC.
- 4-HOUSING AND PLUNGER ARE GRAY, BACK COVER IS OLIVE.
- 5-DATE CODE INDICATING YEAR, MONTH, & DAY OF MONTH MANUFACTURED STAMPED ON HOUSING.
- 6-INTEGRITY OF WELD & SWITCH FUNCTIONALITY TESTED AFTER ASSEMBLY.
- 7-THIS PRODUCT COVERED BY THE FOLLOWING U.S. PATENT; 4,812,604. OTHER PATENTS APPLIED FOR.

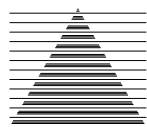
DELTA SYSTEMS, INC. DOES NOT ASSUME ANY LIABILITY ARISING OUT OF THE MISAPPLICATION OF ANY PRODUCT

COMPUTER GENERATED DRAWING - NO MANUAL CHANGES ALLOWED

UNLESS OTHERWISE SPECIFIED DIMENSIONS ARE IN INCHES TOLERANCES ARE:
 .XX \pm .02 .XXX \pm .010 ANG \pm

DO NOT SCALE DRAWING

DRAWN	DATE
AJC	06/08/92
CHECKED	DATE
TW	06/08/92
MATERIAL	
AS NOTED	
FINISH	
AS NOTED	

		DELTA SYSTEMS INC. STREETSBORO, OHIO 44241	
TITLE			
N.C./N.C. PLUNGER SWITCH (DOUBLE POLE)			
SIZE		DWG. NO.	
B		6400-03	
SCALE		PROJECT NO.	REV
FULL		EX311	E

