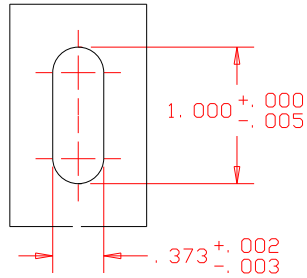
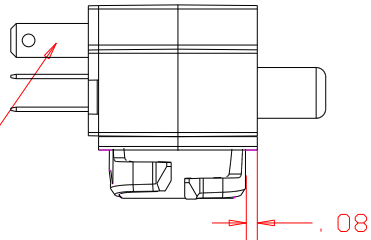


RECOMMENDED MOUNTING SLOT



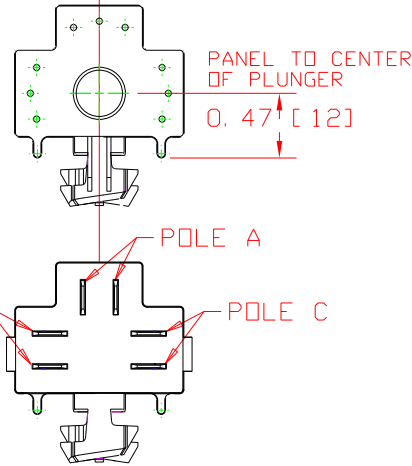
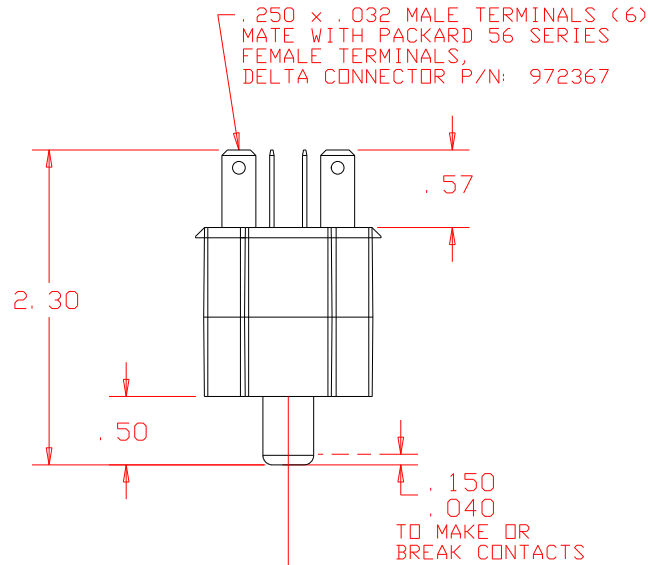
PUNCH ENTRY (SWITCH ENTRY)
 SQUARE EDGE FOR WING RETENTION
 2 mm & 5 mm THICK
 PANEL RECOMMENDED,
 THICKNESS INCLUDES PAINT,
 DECALS, ETC.
 * SQUARE EDGE REQUIRED AS NOTED *



* TERMINALS ARE NICKEL PLATED
 * "NC" STAMPED ON NORMALLY
 CLOSED CONTACTS

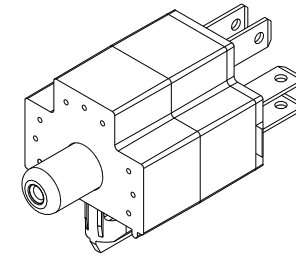
NOTES

- 1) PLASTIC PARTS ARE DELTON (UV STABLE FUEL RESISTANT THERMOPLASTIC)
- 2) SWITCH ASSEMBLY IS DATE CODED TO DAY OF MANUFACTURE
- 3) INTEGRITY OF SONIC WELD TESTED AFTER ASSEMBLY
- 4) THIS PRODUCT COVERED BY THE FOLLOWING US PATENTS; 5, 775, 482 & 4, 812, 604 FURTHER PATENTS PENDING



REVISIONS

~	RELEASE FROM EXPERIMENTAL, CR 1486	07/24/02	JH
A	REMOVE -003 & -004 FROM TABLE, CN 1400	06/08/07	JH



P/N	POLE A	POLE B	POLE C	COLOR
6301-001	NO	NC	NC	OLIVE BODY AND PLUNGER
6301-002	NC	NC	NC	OLIVE BODY; GRAY PLUNGER

DELTA SYSTEMS, INC. DOES NOT ASSUME ANY LIABILITY ARISING OUT OF THE MISAPPLICATION OF ANY PRODUCT

COMPUTER GENERATED
 DRAWING - NO MANUAL
 CHANGES ALLOWED

UNLESS OTHERWISE SPECIFIED
 DIMENSIONS ARE IN INCHES
 TOLERANCES ARE:
 XX± .02 .XXX± .005 ANG±
 DO NOT SCALE DRAWING

DRAWN	DATE
JLM	05/31/02
CHECKED	DATE
JH	06/28/02
MATERIAL	
AS NOTED	
FINISH	
AS NOTED	

DELTA SYSTEMS INC.
 STREETSBOARD, OHIO 44241

TITLE: 3 POLE PLUNGER SWITCH (2mm & 5 mm PANEL RAIL MOUNT)

SIZE: B DWG. NO. 6301 SERIES

SCALE: FULL PROJECT NO. EX367 REV A