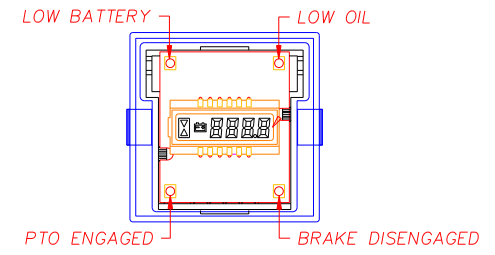


BASIC FUNCTION:
HOURMETER ACCUMULATES HOURS ONLY WHEN VOLTAGE IS APPLIED TO PIN #5 AND PIN #8

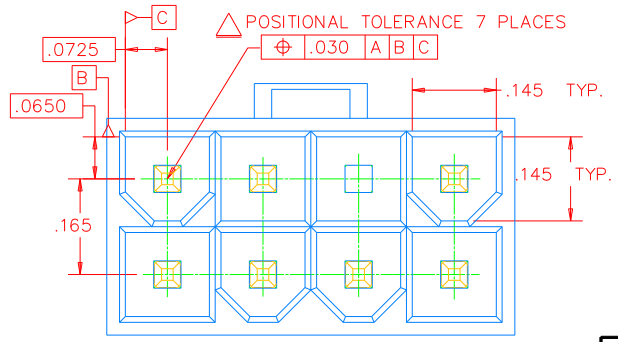
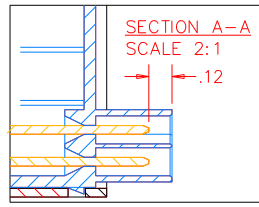
LED FUNCTIONS:
'LOW BATTERY' LED ILLUMINATES AND BATTERY SYMBOL AND VOLTAGE ARE DISPLAYED WHEN VOLTAGE AT PIN #8 DROPS BELOW 11.0+/-0.5 VOLTS. THE LED WILL TURN OFF WHEN THE VOLTAGE GOES ABOVE 11.5+/-0.5 VOLTS. 'PTO ENGAGED' LED ILLUMINATES IF 12 VOLTS IS APPLIED TO PIN #1 AND GROUND IS APPLIED TO PIN #2. 'BRAKE DISENGAGED' LED ILLUMINATES IF 12 VOLTS IS APPLIED TO PIN #3 AND GROUND IS APPLIED TO PIN #4. 'LOW OIL'/'SERVICE REMINDER' LED ILLUMINATES WHEN PIN #7 IS GROUND THROUGH ENGINE OIL SENDER. (SENDER NOT SUPPLIED WITH THIS PRODUCT). IT ALSO FLASHES WHILE THE 'SERVICE REMINDER' PERIOD IS ACTIVE.

LCD FUNCTIONS:
LCD INITIALLY DISPLAYS BATTERY VOLTAGE AT POWER UP. WHEN THE INPUT VOLTAGE EXCEEDS 11.5V, TYPICAL, THE DISPLAY WILL SWITCH TO ACCUMULATED HOURS AFTER APPROX. 5 SECONDS.

SERVICE REMINDER FUNCTIONS:
SERVICE REMINDERS WILL OCCUR EVERY 50 HOURS AND LAST 2 HOURS. WHEN A SERVICE REMINDER IS ACTIVE, THE DISPLAY WILL ALTERNATE BETWEEN 'CHG', 'OIL', AND THE ACCUMULATED TIME. THIS PATTERN WILL BE DISPLAYED FOR APPROX. 5 MINUTES AFTER EVERY APPLICATION OF INPUT VOLTAGE (WHEN THE SERVICE REMINDER IS ACTIVE).



- NOTES:
- 1-DIMENSIONS IN BRACKETS [] ARE IN MILLIMETERS, MILLIMETER TOLERANCES ARE: .X+/- 0.5, .XX+/- 0.15
 - 2-HOUSING IS CLEAR POLYCARBONATE, BACK COVER IS BLACK ABS.
 - 3-PART MUST WITHSTAND SUNLIGHT, WATER, OIL, AND BATTERY ACID.
 - 4-PANEL OPENING: 1.760+.030/-0.000 X 1.760+.030/-0.000 X .187 THICK(MAX.)
 - 5-DATE CODE INDICATING YEAR, MONTH, AND DAY OF MONTH MANUFACTURED STAMPED ON FRONT COVER, PER DELTA MFG. SPEC. 1640.
 - 6-PULLOUT FORCE TO REMOVE METER FROM PANEL IS 25 LBS. MIN.
 - 7-THIS PRODUCT IS PATENT PENDING.
 - 8-MEETS DELTA MODIFIED IP55 FOR FRONT PANEL AND DELTA MODIFIED IP30 FOR BACK PANEL.



DELTA SYSTEMS, INC. DOES NOT ASSUME ANY LIABILITY ARISING OUT OF THE MISAPPLICATION OF ANY PRODUCT		DRAWN MEL 12/12/06	DATE 12/12/06	<p>DELTA SYSTEMS INC. STREETSBORO, OHIO 44241</p>
		CHECKED DAS 12/15/06	DATE 12/15/06	
COMPUTER GENERATED DRAWING - NO MANUAL CHANGES ALLOWED		UNLESS OTHERWISE SPECIFIED DIMENSIONS ARE IN INCHES TOLERANCES ARE: .XX± .02 .XXX± .005 ANG± 1° DO NOT SCALE DRAWING		TITLE APPLICATION PRINT - HOURMETER/VOLTMETER (w/ DECAL)
MATERIAL AS NOTED		FINISH AS NOTED		SCALE FULL
PROJECT NO. 2006-017		REV ~		EX361

